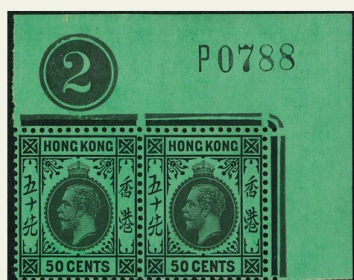




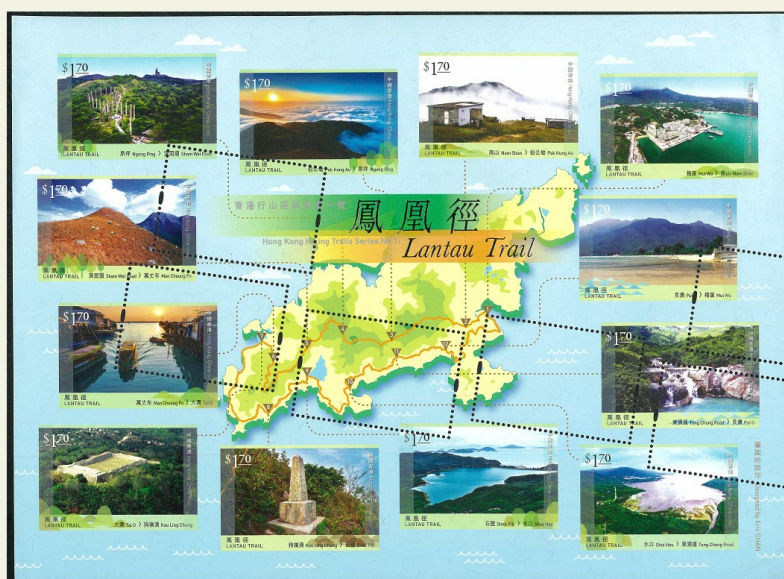
HKPNC



香港郵幣有限公司 HKPNC  
第50期公開拍賣 4月27日舉行  
星期日早上10時正開始



HKPNC Live Auction



## Public Auction #50

50<sup>th</sup> Public Auction with live bidding

Auction start at 10:00am, Sunday 27<sup>th</sup> April 2025, 4 月 27 日上午 10 時開始

**ALL BIDS SHOULD REACH OUR OFFICE BEFORE  
23:59 26<sup>th</sup> April 2025, all bids will be forwarded to the public auction on 27<sup>th</sup> April 2025.**

E-mail: [info@hkpnc.com](mailto:info@hkpnc.com)

Free download of pdf catalogue from [www.hkpnc.com](http://www.hkpnc.com)

Please call the number below to schedule an appointment at our office for viewing.

Telephone +852 9213 5613 / 9339 2040

Flat 06, 30/F.,  
Trendy Centre,  
682-684 Castle Peak Road,  
Lai Chi Kok, Kowloon,  
Hong Kong



***Winson Ng***  
***Managing Director***



***Erica Chan***  
***Sales Director (HK & Mainland)***

**Registration For Bidding**  
**請於以下網站先進行登記**

**<https://liveauction.hkpnc.com/hkpncapp/>**

**or scan below QR code**  
**或掃描以下二維碼**



We encourage new clients to register for bidding at least 48 hours prior to the commencement of the sale to allow sufficient time to process the registration. Please check that you are approved for bidding before the commencement of the sale.

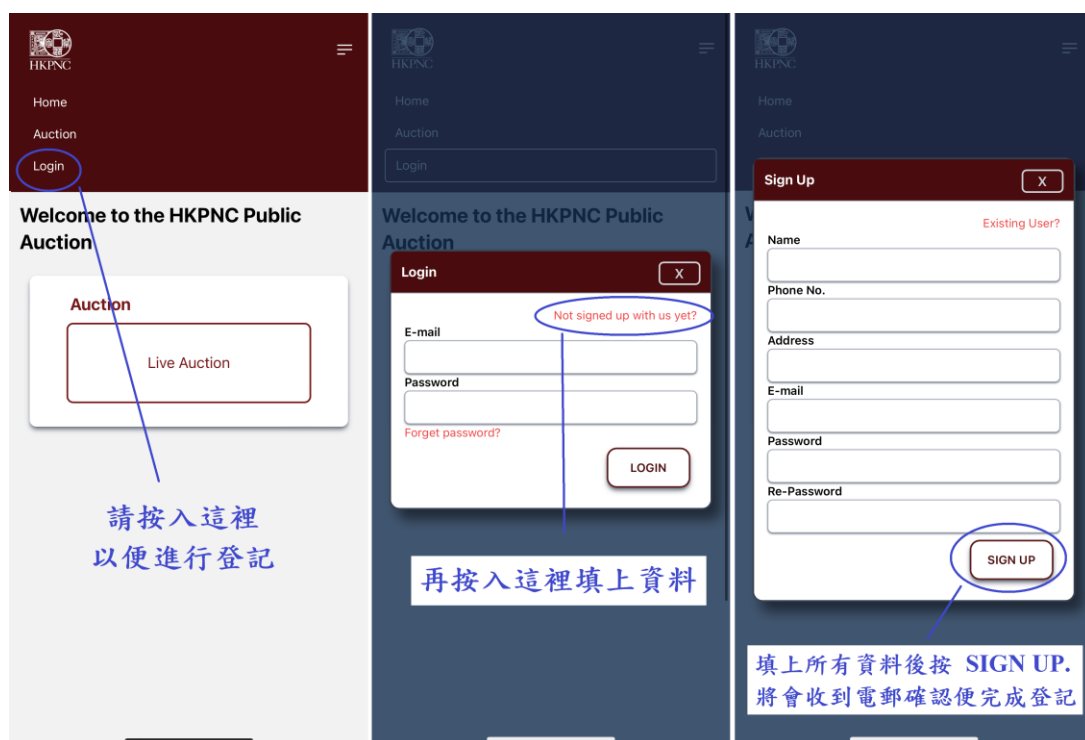
新客戶請在拍賣開始前 48 小時註冊登記賬號，以便有足夠時間處理註冊事宜。並請在拍賣開始前確定您是否已獲準即時競投。

You must be registered and logged into HKPNC Live App to place live bids on the day of the auction. The live bidding platform opens one week prior to the auction, and live bidding is enabled shortly before the commencement of the sale.

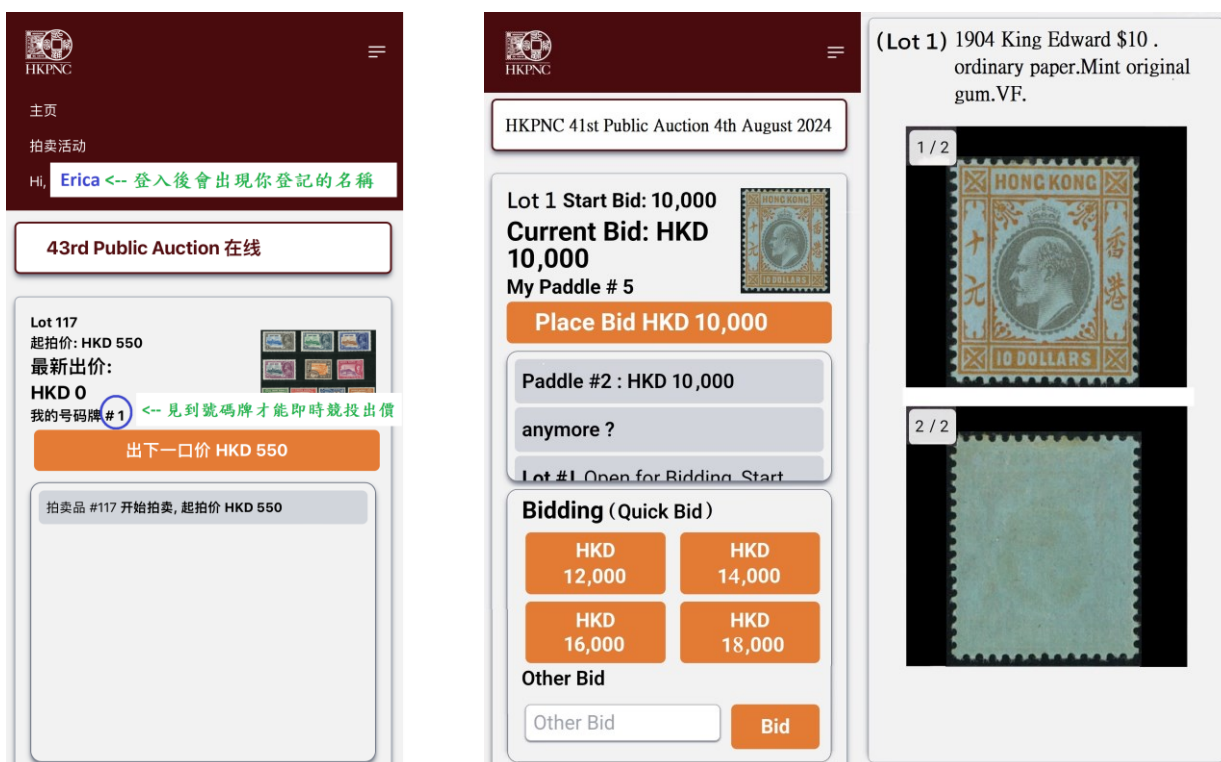
客戶必須註冊並登入 HKPNC Live 應用程式，才能於拍賣當天進行即時競價。現場競價平台會在拍賣前一周開放，並在拍賣開始前啟用即時競價。



客戶可參照以下步驟註冊賬號：



註冊賬號後，請再次登入。拍賣平台於開始前 10 分開放。請客戶確保看到已登記的名稱及號碼牌才能進行即時競價。





## ESTIMATES

Estimates (starting price) have been given for all lots in this auction. They are meant to reflect our idea of the current market value of the item given its scarcity and condition. Lots may sell only more or same (if only one bid) at starting price. No bid is accepted under the starting price.

## BIDDING INCREMENTS (HKD)

100 – 1,000	.....	50
1,000 - 5,000	.....	100
5,000 - 10,000	.....	200
10,000 - 50,000	.....	500
50,000+	.....	1,000

Bids outside these increments will be reduced to the nearest increment.

Please view more pictures from [www.hkpnc.com](http://www.hkpnc.com)

E-MAIL BIDS SHOULD REACH OUR OFFICE BEFORE 23:59 26<sup>th</sup> April 2025

## PAYMENT

Payment can be made by transfer direct to the HKPNC account at:

Bank: The Hongkong and Shanghai Banking Corporation Limited

Account Name: Hong Kong P and N Co L

Account Number: 747-223196-838

Swift Code: **HSBCHKHHHKH**

Bank : Shanghai Commercial Bank

Account Name: Hong Kong Philatelic & Numismatic Co LTD

Account Number: 329-82-22293-1

Swift Code: **SCBKHKHH**

Alternative methods of payment which will enable immediate clearance of purchases included cash, bankers' drafts, personal cheques (order in **Hong Kong Philatelic & Numismatic Co Ltd**)

Purchases will be dispatched as soon as possible upon receipt of your written dispatch instructions and full payment for the lots you have bought.

All bid price in HKD.

This auction does not include postage. If postage is required, additional fees will be charged.

Calculated based on actual weight, the minimum charge is HKD30.  
The minimum charge for EMS is HKD250.

全部拍賣價以港幣計算。

本拍賣不包郵費，如需郵遞，需另外付費。

以實際重量計算，最低收費為港幣 30 元。

EMS 最低收費為港幣 250 元。

Successful buyers of the auction may collect their purchases at our office upon receipt of invoices.

If mailing is required, all risks during the mailing period are borne by the buyer.

(Including loss/damage, etc.), our company is not responsible.

本拍賣結束後，翌日下午開始買家收到發票便可到本店交收。

如需郵寄，郵遞期間一切風險由買家自行承擔。

(包括寄失/損壞等)，本公司概不負責。

**15% Buyer's Premium on the sale price.**

**A 3% discount is available for settlement within 7 working days of invoice issuance.**

**拍賣佣金以成交價 15%計算。**

**如客戶在發單一週內付款，**

**則享有佣金優惠，只需 12%。**

詳細圖片可以上 [auction.hkpnc.com](http://auction.hkpnc.com) 瀏覽

**HKPNC 作為收藏品拍賣中介公司，每項拍賣品會以多年工作經驗依據來描述，客戶提供之貨品會以當時物品狀況如實反映。**

**已成交之貨品如有與描述不符或贗品，請盡快聯絡本公司職員，本公司會安排第三方認證，如確定描述正確，買家須按照拍賣成交價付款。**

**如與描述有不符，本公司會聯絡委託方退貨及安排退款。**

**\*\* 特別提醒 \*\***

**1/ 請在參拍前仔細看預展(本公司能提供實物圖及缺陷描述、圖文並茂)，有任何疑問務必請在開拍前詢問，拍賣前都可以給清晰大圖及仔細圖，請留意拍賣中無法再給仔細圖。**

**請參拍的客戶慎重出價，保證所拍既所得。**

**2/ 本群全品範疇包含：天生紙質點、原廠紙屑齒點、輕微軟印軟折、隱指紋、草紙票燈下輕微潮點、個別票印刷膠痕、天生油墨、透金、金粉票允許極微氧化、允許膠色潤度有正常差異、允許沒有造成票面露白或背膠受損的輕微划痕，拍賣中不一定會註明描述。**

**上品範疇包含：有黃、背貼、允許輕微下清水、燈下有潮斑、膠不均勻/脫膠、無膠、無破損、無破裂薄、無人為修補等均為上品，無明顯弱齒的不會描述。**

**每個人對齒的標準不同，所以齒飽弱自定，只要是上品個別細節不會一一描述。出價參拍表示認可群規，對品相要求嚴格極致的藏友，要求絕品的請謹慎出價或不要參拍。如以上理由退貨的，概不接受。**

**3/ 依拍賣慣例，拍賣中拍賣師有裁切權。保留編輯中錯誤之勘誤權。**

**4/ 由於網路卡頓，延遲等問題可能看到的出價先後有所不同，以本公司網站系統為準，請大家支持與理解。**



**Lot 1 – 419**  
**27-Apr-2025**  
**10am**  
**Stamps / Banknotes**



## Hong Kong – QV,KE,KGV,KGVI,QE



### 港幣起拍價

1	1862 QV no watermark 96c & 18c CC wmk both re-back forgery. Useful reference.	Start bid 500
2	1863 QV 4c 12.5 perf. variety. VFU with B62 killer.	Start bid 400
3	1863 QV 6c & 24c CC wmk both re-gum. Fine.	Start bid 400
4	1863 QV 24c deep green shade CC wmk in pair. Mint part OG. Corner creased at right stamp. Fine and very different shade.	Start bid 3,000
5	1863 QV 30c mauve and deep mauve both mint OG. VF.	Start bid 1,500
6	1863 QV 30c vermillion CC wmk, mint OG. Fine	Start bid 2,000
7	1863 QV 30c vermillion CC wmk, mint OG toning. Close tear at right. Fine	Start bid 300
8	1863 QV 48c carmine CC wmk, mint OG. Fine.	Start bid 3,000
9	1863 QV 96c olive bistre .B62 killer in blue. Light toning with full perf. Scarce.	Start bid 2,000
10	1863 QV 96c CC wmk with right wing margin. Fine used with Shanghai S1 killer.	Start bid 300
11	1880 QV 5c/8c orange. Unused no gum. Fresh shade. 2016 France Certification.	Start bid 800
12	1880 QV surcharge set of 5. Fine used.	Start bid 400
13	1880 QV 5c CC wmk single. Mint OG. Broken frame plate flaw on left. Fine & scarce.	Start bid 1,000
14	1891 QV 20c/30c no Chinese character, mint OG even toning. Fine and scarce.	Start bid 2,500
15	1891 QV 20c/30c 50c/48c with Chinese character. Both fresh mint OG. Good condition.	Start bid 400





16



17



18



19



20



21



22



23



24

### 港幣起拍價

16	1891 Chinese character surcharge set plus extra 20c & \$1. Mixed condition.	Start bid 800
17	1896 QV 4c new issue with SPECIMEN overprint. Mint OG. Fine and scarce.	Start bid 400
18	1898 QV 10c/30c no chinese character. VFU with HK cds dated 27-AU-1898. Original shade. Scarce.	Start bid 1,500
19	1900 QV 4c 5c 10c & 30c all mint never hinge original gum. VF.	Start bid 600
20	1900 QV 2c green block of 4. Mint hinged at top only. Fresh OG.	Start bid 400
21	1900 QV 4c carmine block of 4. Mint hinged at one stamp only. Fresh OG.	Start bid 400
22	1900 QV 4c & 5c in block of 4. Mint hinged at top pair. Fresh OG. VF.	Start bid 700
23	1900 QV 10c blue block of 8. UM with toning. Some split perf. at left. Fine.	Start bid 800
24	1900 QV 12c blue block of 4. UM even toning. Some gum creased. Fine.	Start bid 500





25

26

27

28

29



30



31



32



33



34



35



36

港幣起拍價

- |    |  |                 |
|----|--|-----------------|
| 25 | 1890 QV \$2 mint OG. Mint hinged. Fine.                                  | Start bid 900   |
| 26 | 1890 QV \$2 mint OG with SPECIMEN overprint, some toning spot. Fine.     | Start bid 700   |
| 27 | 1890 QV \$3 mint OG with SPECIMEN overprint, fine.                       | Start bid 900   |
| 28 | 1897 QV \$1/\$2 mint OG (F10). Toning.                                   | Start bid 500   |
| 29 | 1897 QV \$1/\$2 mint OG (F11). Toning.                                   | Start bid 800   |
| 30 | 1903 KE 1 <sup>st</sup> issue 1c to \$2 Mint OG. F-VF.                   | Start bid 800   |
| 31 | 1903 KE 1 <sup>st</sup> issue 8c block of 4.UM. F-VF.                    | Start bid 700   |
| 32 | 1903-04 KE 2c 5c 12c & 20c mint lightly hinged and UM. VF and fresh.     | Start bid 500   |
| 33 | 1904 KE 2 <sup>nd</sup> issue \$2 and \$5 both postally used. Fine used. | Start bid 900   |
| 34 | 1903 KE 1 <sup>st</sup> issue \$3 mint OG. Fresh.                        | Start bid 1,500 |
| 35 | 1903 KE 1 <sup>st</sup> issue \$10 mint OG. Fresh.                       | Start bid 4,500 |
| 36 | 1904 KE 2 <sup>nd</sup> issue \$3 mint OG. Fresh.                        | Start bid 1,200 |





37



38



39



40



41



42



43



44



45

港幣起拍價

37	1904 KE 2 <sup>nd</sup> issue \$3 mint OG lightly hinged. Fresh.	Start bid 2,000
38	1904 KE 2 <sup>nd</sup> issue \$5 mint OG. Fresh.	Start bid 2,200
39	1904 KE 2 <sup>nd</sup> issue \$5 mint OG. Fresh.	Start bid 2,000
40	1904 KE 2 <sup>nd</sup> issue \$10 ordinary paper, mint OG. Fresh.	Start bid 5,600
41	1907-11 KE 3 <sup>rd</sup> issue complete set of 8. VF mint OG.	Start bid 1,500
42	1907-11 KE 1c & 2c x2. All in UM B/4. VF UM. Fresh.	Start bid 600
43	1912 KGV 1 <sup>st</sup> issue complete set of 16. VF fresh mint OG.	Start bid 6,600
44	1912 KGV 1 <sup>st</sup> issue complete set of 16, mint OG. Some toning on low values. \$10 with light corner creased. Fine set.	Start bid 4,500
45	1912 KGV \$1 and \$2 mint OG. VF.	Start bid 500





46

47

48

49



50



51



52



53



54

港幣起拍價

- |    |  |                 |
|----|--|-----------------|
| 46 | 1912 KGV \$3 single, mint OG. VF.  | Start bid 800   |
| 47 | 1912 KGV \$3 single, mint OG. VF.  | Start bid 800   |
| 48 | 1912 KGV \$5 green back single, mint OG. VF.   | Start bid 2,000 |
| 49 | 1912 KGV \$5 olive back single, mint OG. VF.   | Start bid 3,000 |
| 50 | 1921 KGV 2 <sup>nd</sup> issue complete set of 18. All with SPECIMEN overprint or perfin. Mint OG. F-VF set. Scarce. | Start bid 7,600 |
| 51 | 1921 KGV 2 <sup>nd</sup> issue complete set of 18. All OG with some toning. Fine.                                    | Start bid 2,000 |
| 52 | 1921 KGV 2 <sup>nd</sup> issue complete set of 18. All fresh mint OG. VF.  | Start bid 2,600 |
| 53 | 1921 KGV 5 block of 4, All UM. From 1c to 30c. F-VF.   | Start bid 500   |
| 54 | 1921 KGV 50c olive yellow back. Corner plate 2 pair with Req. P0788. Fresh UM, scarce.                               | Start bid 4,000 |





- |    |  | 港幣起拍價            |
|----|--|------------------|
| 55 | 1921 KGV 50c olive yellow back paper. Fresh mint never hinge OG.VF.  | Start bid 600    |
| 56 | 1921 KGV \$5 olive yellow back paper. Fresh mint lightly hinge OG. VF and scarce.  | Start bid 3,000  |
| 57 | 1921 KGV \$1 \$2 and \$3 all used and hinged on Frankin D Roosevelt collection card. Fine.   | Start bid 300    |
| 58 | 1917 China BPO KGV 50c to \$10 6 values set all with SPECIMEN overprint. Fresh UM. Scarce.   | Start bid 8,000  |
| 59 | 1917 China BPO KGV 50c to \$10 6 values set in pair all with SPECIMEN overprint. Fresh UM except \$1 \$3 hinged at one stamps. Scarce. | Start bid 18,000 |
| 60 | 1917 China BPO KGV complete set of 16. VF OG most stamps lightly hinged.   | Start bid 8,600  |
| 61 | 1917 China BPO KGV short set from 1c to \$1 Mint OG. VF.   | Start bid 300    |
| 62 | 1922 China BPO 2 <sup>nd</sup> issue 1c to 25c all in corner plate 1 pair. Hinged at top margin only, OG toning. Fine.                 | Start bid 800    |





63



64



65



66



67



68



69

港幣起拍價

- |    |   |                  |
|----|---|------------------|
| 63 | 1917 China BPO KGV 1 <sup>st</sup> issue 1c to \$2 marginal block of 4. Fresh UM. VF and scarce.          | Start bid 14,000 |
| 64 | 1917 China BPO KGV \$5 block of 4. Fresh OG. Lightly hinged at top pair. Only few blocks recorded. Rare.  | Start bid 30,000 |
| 65 | 1917 China BPO KGV \$10 block of 4. Fresh OG. Lightly hinged at top pair. Only few blocks recorded. Rare. | Start bid 45,000 |
| 66 | 1938 KGV pre-war complete set of 13, SPECIMEN perfin. Mint OG. Fine and scarce.                           | Start bid 4,000  |
| 67 | 1941 KGVI set of 4 in B/4. Perf. 15x15.5. UM with some light even toning. Fine.                           | Start bid 800    |
| 68 | Small group of KGVI block all with plate number. All UM and fine.   | Start bid 600    |
| 69 | 1946 KGV post-war complete set of 16. VF fresh UM.  | Start bid 1,400  |





70



71



72



73



74



75



76



77

港幣起拍價

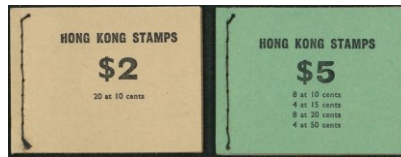
- |    |  |                 |
|----|--|-----------------|
| 70 | 1954 QEII complete set of 14. VF fresh UM.   | Start bid 800   |
| 71 | 1970 QEII complete set of 13, PVA gum chalky paper set. VF fresh UM. CV HK\$3,000.               | Start bid 1,500 |
| 72 | 1968-73 Coat of Arm 65c single and paper all with Req. number N & R, VF UM.                      | Start bid 300   |
| 73 | 1985 QEII no watermark complete set in corner block of 10. All with Req. number. Fresh UM.       | Start bid 3,500 |
| 74 | 1987 QEII complete set in Req. number block of 4. VF fresh UM. Scarce.                           | Start bid 1,200 |
| 75 | 1989 QEII complete set in Req. number block of 4. VF fresh UM. Scarce.                           | Start bid 1,800 |
| 76 | 1990 QEII complete set in Req. number block of 4. VF fresh UM. Scarce.                           | Start bid 1,600 |
| 77 | 1991 QEII complete set in Req. number block of 4. VF fresh UM. 10c separate in two pair. Scarce. | Start bid 1,400 |



## Hong Kong – Booklet & Postage Due



78



79



80



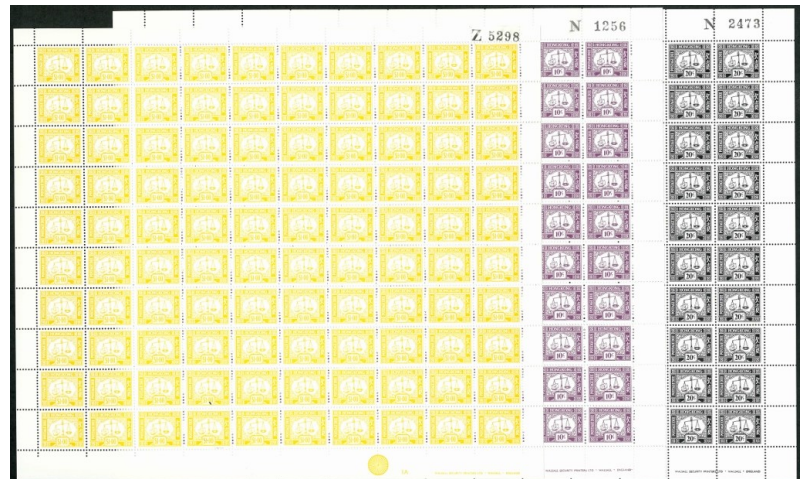
81



82



83



84

港幣起拍價

- |    |   |                 |
|----|---|-----------------|
| 78 | 1973-75 different watermark booklet x4. All VF.   | Start bid 800   |
| 79 | 1973 large crown watermark booklet \$2 and \$5 set of 2. VF.  | Start bid 500   |
| 80 | 1923 1 <sup>st</sup> postage due two complete sets. Upright and sideways wmk. Upright wmk set in UM condition and hinged on sideways wmk set. F-VF. | Start bid 500   |
| 81 | 1923 1 <sup>st</sup> postage due two complete sets. Upright and sideways wmk. Mint toning gum. Fine.  | Start bid 500   |
| 82 | 1923 1 <sup>st</sup> postage due complete sets. sideways wmk postally used B/4. VF.   | Start bid 300   |
| 83 | 1938 2nd postage due complete sets in B/4. Fresh UM. VF. Scarce.  | Start bid 2,000 |
| 84 | 1976 postage due 10c 20c & \$1 in complete sheet of 100. Req. N or Z. Few toning spot on 20c only. F-VF.  | Start bid 1,000 |

## Hong Kong – Japan Occupation



85 1945 Japan Occupation HK surcharge set of 3. VF used.

港幣起拍價

Start bid 700

86 Group of 4 Mr H Da Luz philatelic covers cancelled different branch office cds. Fine.

Start bid 500

## Hong Kong – Revenue



87 1908 & 1921 5c stamp duty in different watermark. Mint OG. Fine.

港幣起拍價

Start bid 500

88 1938 KGVI 50c \$2 & \$4 revenue. All UM OG. VF.

Start bid 500

89 1938 KGVI \$4 revenue single with plate 1 margin. VF UM.

Start bid 300

## Hong Kong – Cancellation



90 1863 QV 6c tied B62 and red AMOY PAID cds, Stamp with reversed watermark variety. Fine.

港幣起拍價

Start bid 500

91 1863 QV 2c & 8c both tied AMOY A1 killer in blue inking. 8c perf. fault. F-VF.

Start bid 700

92 1863 QV 6c & 1877 16c both cancelled AMOY A1 killer. VF.

Start bid 400





93



94



95



96



97



98



99



100

港幣起拍價

- |     |  |                 |
|-----|--|-----------------|
| 93  | Group of 10 QV stamps all cancelled AMOY PAID or A1 killer. Few stamps thin fault. Fine. | Start bid 700   |
| 94  | Group of 4 QV all tied by AMOY D27 killer. Fine.   | Start bid 500   |
| 95  | Group of 4 QV all tied by AMOY D27 killer. 10c fault. Fine.                              | Start bid 500   |
| 96  | 1863 QV 96c CC wmk tied by AMOY D27 killer. Fine and scarce.                             | Start bid 700   |
| 97  | 1885-1891 three surcharges set all with AMOY straight line type cds. VF.                 | Start bid 500   |
| 98  | 1885-1891 three surcharges set all with AMOY cds. VF.                                    | Start bid 500   |
| 99  | 1876-77 QV surcharge set of 2 and 16c single all tied CANTON C1 killer. VF.              | Start bid 1,000 |
| 100 | 1863 QV 96c CC watermark tied by CANTON straight line cds dated 30-JY-1884. Scarce.      | Start bid 500   |





101



102



103



104



105



106



107



108



109



110

港幣起拍價

- |     |  |               |
|-----|--|---------------|
| 101 | 1885 & 1891 two QV surcharge set all tied by CANTON straight line cds. VF.                           | Start bid 350 |
| 102 | 1904 KE 2c & 1922 China BPO KGV \$2 both cancelled CHEFOO BPO cds. \$2 with thin. F-VF.              | Start bid 300 |
| 103 | 1863 QV 30c 1882 QV 5c & 10c all tied by HOIHOW index C facing down cds. Trimmed perf. on 30c. F-VF. | Start bid 500 |
| 104 | Group of 5 QV all tied by HOIHOW index C cds. F-VF.  | Start bid 600 |
| 105 | 1891 QV 10 & 30c two sets all tied by HOIHOW index A and C cds. VF.                                  | Start bid 600 |
| 106 | Group of 7 QV stamps all tied by HOIHOW index A and C. F-VF.   | Start bid 700 |
| 107 | 1891 QV 20c/30c tied by NINGPO straight line cds plus rhomboid dot marking. Thin fault.              | Start bid 200 |
| 108 | 1891 QV 10c tied by NINGPO straight line cds plus rhomboid dot marking. Tear at left. Fine.          | Start bid 400 |
| 109 | Group of 5 QV stamps all tied by NINGPO straight line cds. F-VF.                                     | Start bid 600 |
| 110 | Group of 7 QV stamps all tied by NINGPO index C cds. F-VF.   | Start bid 600 |





港幣起拍價

111	1862 QV 2c no watermark & 1863 8c CC wmk both tied by SHANGHAI type A cds in black and blue inking. F-VF.	Start bid 1,000
112	1863 QV 4c 12.5 perf. x2. Both tied by SHANGHAI S1 killer in black inking. Fine.	Start bid 600
113	Group of 3 QV stamps all tied by fake sunburst killer, also KE \$10 forgery used. Useful reference.	Start bid 400
114	1863 QV 4c 12.5 perf tied by Japan Y1 killer in blue inking. Fine.	Start bid 1,000
115	1863 QV 18c CC wmk tied by Japan Y1 killer in black inking. Fine with toning. Scarce.	Start bid 800
116	Group of 12 QV stamps all tied by Japan Y1 killer. Few with thin fault. Fine.	Start bid 800
117	Group of 6 QV with different postmarks included Hoihow and Tokin. Fine.	Start bid 300
118	1863 QV 96c olive bistre tied by supplementary killer 62B in blue inking. Fine with small thin. Scarce.	Start bid 1,500
119	1863 QV 96c olive bistre tied by supplementary killer 62B in blue inking. Fine with short perf. and tear at top. Fine.	Start bid 1,000
120	1863 QV 96c wing margin tied by supplementary killer 62B in black inking, fine.	Start bid 500
121	1898 QV \$1 on 96c tied by error year digit 90 cds. VF.	Start bid 500





122



123



124



125



126



127



128



129



130



131

### 港幣起拍價

122	1904 KE 12c tied by W. Branch index F type C cds. Scarce on stamp. Fine.	Start bid 300
123	1863 QV 8c CC wmk tied by Marine Sorter D marking. Small surface scuff in right side. Still scarce marking.	Start bid 1,500
124	Two QV stamps both tied by Straits Settlements dot ship killer. Fine.	Start bid 250
125	1880 QV 5c & 1882 QV 10c both tied by Japan SHIP marking. Fine.	Start bid 300
126	1891 QV 20c/30c tied by HK TO SHANGHAI cds. Scarce used on stamp.	Start bid 300
127	1921 KGV 25c on piece tied by complete HK/ NEW GUINIE SERVICE ship marking. Scarce.	Start bid 300
128	Small collection of KE & KGV all tied by Austria LLOYD AUSTRIACO marking. Fine.	Start bid 600
129	KE 4c and 10c tied by Australia GPO killer. VF.	Start bid 350
130	KE 10c tied by Australia New South Wales NSW killer. VF.	Start bid 250
131	Group of 4 KE stamps all tied by Australia LOOSE SHIP LETTER marking. VF.	Start bid 500





132



133



134



135



136



137



138



139



140



141



142

## 港幣起拍價

- |     |  |                 |
|-----|--|-----------------|
| 132 | KGV 2c 12c & 20c all tied by Australia CAIRNS cds. F-VF.   | Start bid 400   |
| 133 | Group of 6 KE stamps tied by Australia DARWIN cds. VF.   | Start bid 700   |
| 134 | Group of 7 KGV stamps tied by Australia BRISBANE cds. VF.  | Start bid 600   |
| 135 | Group of 4 KE & KGV stamps tied by Australia SYDNEY cds. VF.   | Start bid 300   |
| 136 | KE 2c & 4c tied by Australia Thursday Island cds. VF.  | Start bid 200   |
| 137 | Group of 4 KE & KGV stamps tied by Australia Townsville cds. VF.   | Start bid 300   |
| 138 | KE 2c & 4c tied by Ceylon Colombo cds. Fine.   | Start bid 200   |
| 139 | 1882 QV 5c tied by Deal Scotland town cds. VF and scarce.  | Start bid 300   |
| 140 | KGV 4c pair & 20c tied by New Guinea cds. Fine.  | Start bid 300   |
| 141 | KE 4c on piece tied by HK cds plus New Zealand Wellington cds. VF.   | Start bid 250   |
| 142 | 1891 QV 2c Jubilee tied by 1 <sup>st</sup> day 22 <sup>nd</sup> Jan 1891 cds index D. Very few index D cds exist on 1 <sup>st</sup> day chop. VF and scarce. | Start bid 1,000 |



## Hong Kong – Error



143



144



145



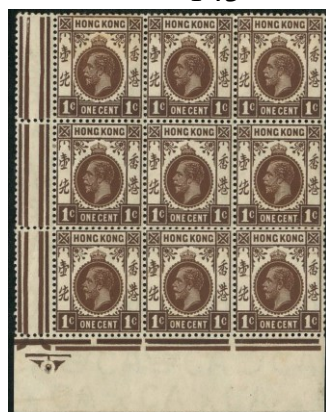
146



148



149



147



150



151



152



153



154



155



156

港幣起拍價

- |     |  |                 |
|-----|--|-----------------|
| 143 | 1863 QV 4c 12.5 perf. <b>inverted watermark</b> variety. VFU with B62 killer. Scarce.  | Start bid 1,000 |
| 144 | 1863 QV 18c CC wmk <b>inverted and reversed</b> variety. Fine used with B62 killer. Small thin perf. at top. Unlisted in Yangs. Very scarce. | Start bid 2,000 |
| 145 | 1891 QV no Chinese character \$1/96c with <b>dry overprint</b> variety, mint OG. 1 <sup>st</sup> time seen by us.                            | Start bid 4,000 |
| 146 | 1898 QV \$1/96c with <b>inverted Chinese character</b> variety. VF used with HK cds. Scarce.   | Start bid 1,200 |
| 147 | 1912 KGV 1c block of 9 with margin showing broken crown on middle stamp. UM even toning. Fine.   | Start bid 800   |
| 148 | 1945 KGV 50c with <b>head shift to right</b> touch design frame variety, VF mint OG. Unusual.  | Start bid 300   |
| 149 | 1917 China BPO KGV 1c with <b>broken crown</b> variety. VF mint fresh OG.  | Start bid 600   |
| 150 | 1962 QEII \$1.3 corner block of 4 showing <b>blue colour shift</b> variety. Req. V30509. VF UM.  | Start bid 400   |
| 151 | 1962 QEII \$1.3 corner block of 4 showing <b>blue colour shift</b> variety. VF UM.   | Start bid 400   |
| 152 | 1962 QEII \$1.3 corner block of 4 showing <b>ochre colour shift</b> variety. Req. P46921. VF UM.   | Start bid 500   |
| 153 | 1962 QEII \$1.3 corner block of 4 showing <b>pink colour shift</b> variety. Req. P25375. VF UM.  | Start bid 600   |
| 154 | 1962 QEII \$2 block of 4 showing <b>ochre colour shift</b> variety. VF UM.   | Start bid 400   |
| 155 | 1962 QEII \$5 block of 4 showing <b>blue colour shift</b> variety. VF UM.  | Start bid 600   |
| 156 | 1962 QEII \$5 block of 4 showing <b>ochre colour shift up 1cm</b> variety. VF UM.  | Start bid 800   |





157

158

159



160



161



162



163



164



165

港幣起拍價

- |     |   |               |
|-----|---|---------------|
| 157 | 1970 QEII \$5 PVA gum chalky paper showing <b>pink colour shift</b> variety. VF UM.   | Start bid 300 |
| 158 | 1970 QEII \$1.3 & \$10 PVA gum chalky paper showing <b>ochre omitted</b> variety. Light toning spot. F-VF UM.                 | Start bid 600 |
| 159 | 1962 QEII \$10 corner single showing <b>pink colour shift</b> variety. VF UM.   | Start bid 350 |
| 160 | 1973 QEII \$5 block of 8 showing <b>dry print on coating colour</b> variety. VF UM.   | Start bid 600 |
| 161 | 1988 frama label \$0.1 with <b>missing yellow base colour</b> variety. VF UM.   | Start bid 400 |
| 162 | 1976 postage due 10c & 50c with top margin showing <b>inverted watermark</b> variety. VF UM. Unlisted in any catalogue.       | Start bid 800 |
| 163 | Small group of errors included QEII 60c B/4 <b>perf. shift</b> and 1968 seacraft <b>colour shift</b> . Mixed condition. Fine. | Start bid 300 |
| 164 | 1965 ICY 10c single and pair with <b>perf. shift</b> variety. UM even toning. Stain on pair. Fine.                            | Start bid 600 |
| 165 | 1965 Churchill 10c B/4 x5 showing <b>various levels of red colour shift</b> variety. Some toning spot. Fine.                  | Start bid 600 |





166



167



168



169



170



171



172



173

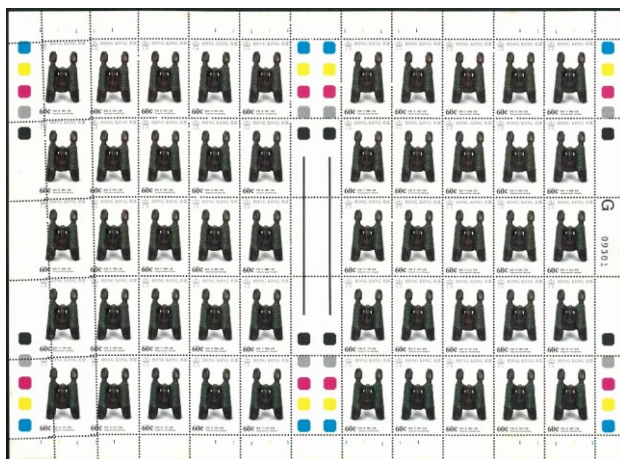


174

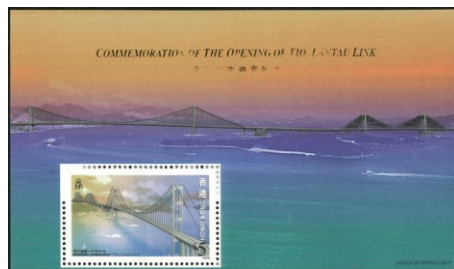
## 港幣起拍價

- |     |   |                 |
|-----|---|-----------------|
| 166 | 1968 HK seacraft 20c B/4 with <b>brown colour shift</b> . Also \$1 B/4 showing <b>black colour double print</b> variety. Toning spot. Fine. | Start bid 700   |
| 167 | 1968 HK Seacraft \$1.3 corner B/4 with <b>pre-cutting paper fold</b> variety. UM light toning spot. Fine.                                   | Start bid 400   |
| 168 | 1970 HK Expo 25c corner block of 4, <b>perf. shift</b> variety. VF.   | Start bid 300   |
| 169 | 1976 Diamond Jubilee \$1.3 <b>missing background grey colour</b> variety. VF UM. Scarce.  | Start bid 1,500 |
| 170 | Small collection of commemorative issues. All postally used with <b>perf. shift or colour shift</b> . Fine.                                 | Start bid 300   |
| 171 | 1981 HK Fish 20c x2, both with <b>perf. shift</b> variety. VF UM.   | Start bid 400   |
| 172 | 1981 Royal wedding 20c B/4 bottom two stamps partly <b>missing red colour</b> variety. VF UM. Unusual variety.                              | Start bid 1,000 |
| 173 | 1983 HK night 30c corner B/4 showing <b>silver shift to right</b> variety. VF UM.   | Start bid 1,000 |
| 174 | 1988 Year of Dragon MS showing missing colour on 50c. VF UM.  | Start bid 200   |





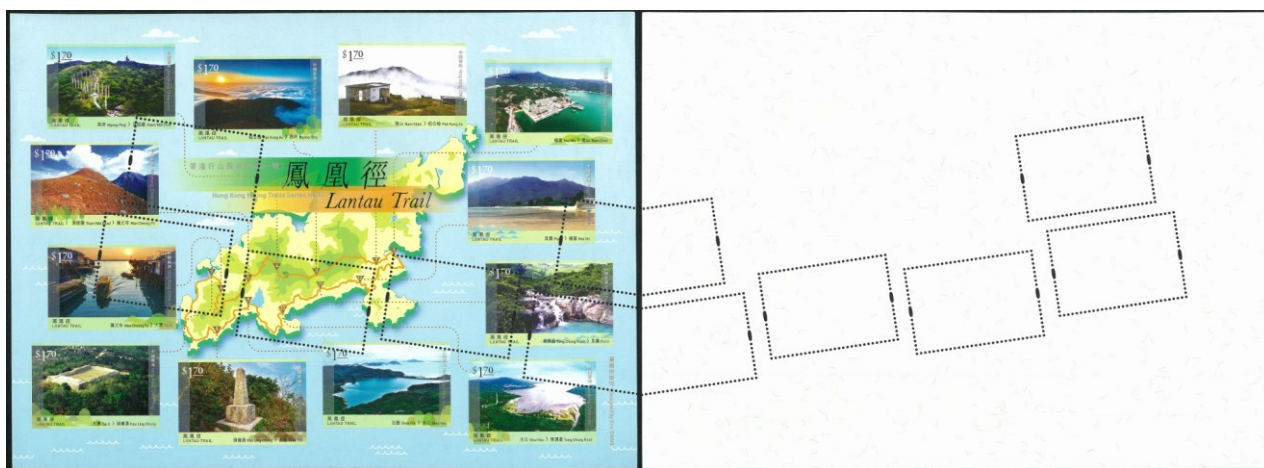
175



176

港幣起拍價

- 175 1989 Modern Painting 60c complete sheet of 50 showing **left perf. shift variety**. Toning spots affect some variety stamps. Fine and rare variety. Start bid 3,000
- 176 1997 Lantau Link \$5 MS showing gold colour partly missing. Also imperf. at top variety. VF UM. Start bid 400



177

港幣起拍價

- 177 2018 Lantau Trail \$20.4 MS showing **misperf. variety** leaving some stamps **imperf.** variety. VF fresh UM. Only one recorded up to now. Extremely rare modern error. Start bid 10,000

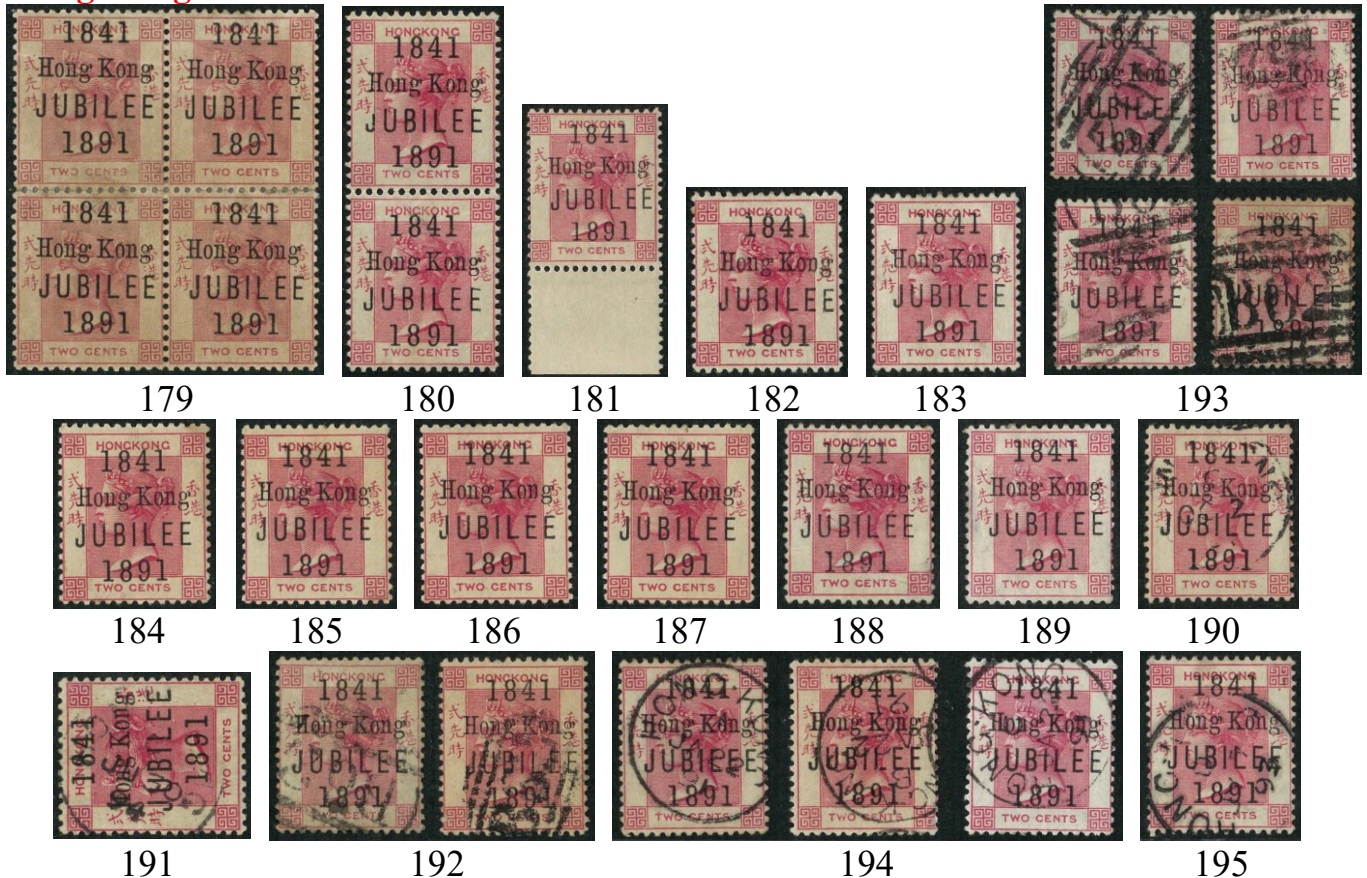


178

港幣起拍價

- 178 1937 coronation FDC post to New South Wake. Crown **brown colour double print variety**, arrival marking on back. Fine and scarce. Start bid 1,000

## Hong Kong – Commemorative



### 港幣起拍價

179	1891 QV 2c Jubilee. Block of 4. Rejoined from two pairs. OG dry gum and toning. Fine.	Start bid 10,000
180	1891 QV 2c Jubilee. Vertical pair with short J. Lightly hinged at top stamps. OG. VF.	Start bid 5,600
181	1891 QV 2c Jubilee. Mint never hinge original gum with bottom margin. VF. Scarce.	Start bid 5,000
182	1891 QV 2c Jubilee. Mint never hinge original gum. VF. Scarce.	Start bid 4,500
183	1891 QV 2c Jubilee. Mint OG. Fine.	Start bid 2,500
184	1891 QV 2c Jubilee. Mint OG toning gum. Fine.	Start bid 1,000
185	1891 QV 2c Jubilee. Mint OG toning gum. Fine.	Start bid 1,000
186	1891 QV 2c Jubilee. Mint OG toning gum. Fine.	Start bid 1,000
187	1891 QV 2c Jubilee. Mint OG toning gum. Fine.	Start bid 1,000
188	1891 QV 2c Jubilee. Unused no gum with creased. Fine.	Start bid 500
189	1891 QV 2c Jubilee. Unused no gum with thin on back. Fine.	Start bid 600
190	1891 QV 2c Jubilee. Used with 2-Oct-1891 HK cds. VF late usage.	Start bid 750
191	1891 QV 2c Jubilee. Used with 30-Jun-1894 HK cds. VF late usage.	Start bid 800
192	1891 QV 2c Jubilee x2. Both postally used with B62 killer. One stamp thin. Fine.	Start bid 1,200
193	1891 QV 2c Jubilee x4. All postally used with B62 killer. Fine.	Start bid 2,400
194	1891 QV 2c Jubilee x3. All CTO 1 <sup>st</sup> day cds. One stamp thin on back. Fine.	Start bid 1,800
195	1891 QV 2c Jubilee. Used with 7-July-1893. VF late usage.	Start bid 600





## 港幣起拍價

- |     |   |                 |
|-----|---|-----------------|
| 196 | 1935 Silver Jubilee set of 4. Fresh UM original white gum. VF.                                | Start bid 600   |
| 197 | 1935 Silver Jubilee set of 4. UM OG with minor toning only. VF set.                           | Start bid 400   |
| 198 | 1935 1941 & 1946 three early commemorative sets. All OG mint hinged. VF.                      | Start bid 350   |
| 199 | 1948 Silver Wedding set of 2. VF fresh UM.  | Start bid 1,000 |
| 200 | 1948 Silver Wedding set of 2. VF fresh UM.  | Start bid 1,000 |
| 201 | 1963 Red cross corner block of 4 with sheet number. UM light toning. Fine.                    | Start bid 1,000 |
| 202 | 1968 HK seacraft block of 4 set with right margin. Fresh UM. One small press mark on \$1.3.   | Start bid 800   |
| 203 | Early commemorative issue all complete set in sheet number B/4. Most with light toning. F-VF. | Start bid 1,500 |





204



205



206



207



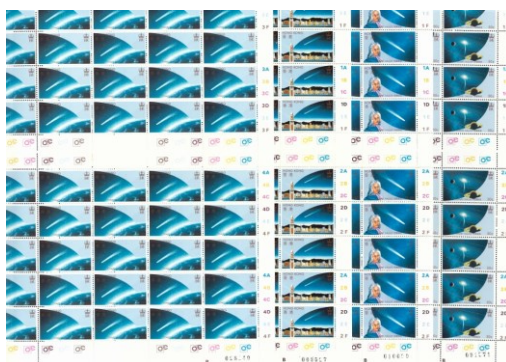
208



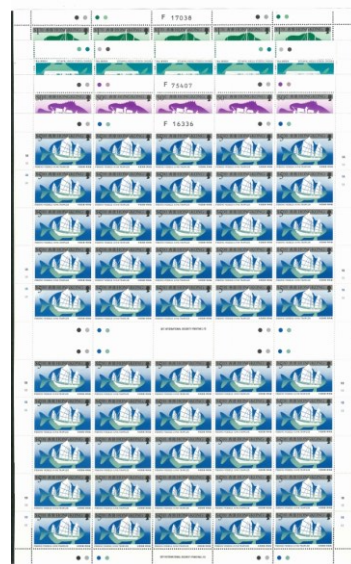
209



210



211



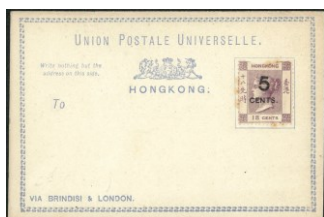
212

港幣起拍價

- |     |  |                  |
|-----|--|------------------|
| 204 | 1970 Year of Dog plate corner block of 4. UM, One short perf. on \$1.3 and light even gum toning. Light stain on margin. Fine.                 | Start bid 600    |
| 205 | 1970 Year of Dog B/4 set with margin. Fresh UM. VF.  | Start bid 1,000  |
| 206 | 1972 Year of Rat block of 4 set. UM. Gum oxide. Fine.  | Start bid 350    |
| 207 | 1975 HK Festival MS x 20. Most with light toning on edge. Fine.  | Start bid 2,000  |
| 208 | 1975 HK Festival MS x 20. Most with light toning on edge. Fine.  | Start bid 2,000  |
| 209 | 1994 HK Corals Imperf. proof from printer. No gum. Size 13.5x8cm which is larger than issued sheet. Rare.                                      | Start bid 10,000 |
| 210 | 1986 HK Expo 86 complete sheet of 50 sets. With original HK PB leaflet. Unfolded sheet. Light even toning and some creased in margin. Unusual. | Start bid 700    |
| 211 | 1986 Comet Halley complete sheet of 50 sets. UM. Unfolded sheet. VF.   | Start bid 700    |
| 212 | 1886 Fishing Vessels complete sheet of 50 sets. Unfolded sheet. Light creased on margin. F-VF.   | Start bid 700    |



## Hong Kong – Postal Stationery



213



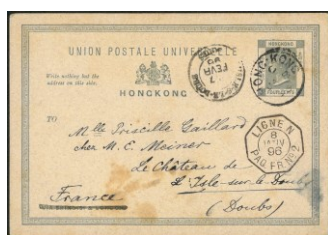
214



215



216



217



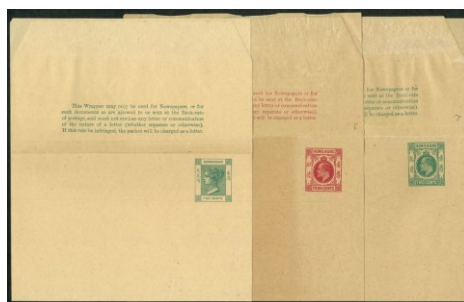
218



219



220



221



222

港幣起拍價

213	1879 postal card 5c/18c white card unused, stamp with fault. Fine.	Start bid 500
214	1903 KE 1c 4c postal card unused. Both cards in good condition. VF.	Start bid 300
215	QV 3c and 4c/3c card both postally used with French Ligne N marking. Fine.	Start bid 300
216	QV 3c cards x2 both postally used with French Ligne N marking. Fine.	Start bid 400
217	1896 QV 4c postal card to France tied HK cds (8-Jan-1896). With Ligne N marking. Fine.	Start bid 300
218	Group of 11x QV KE postal card with surcharge type and double card. All unused in mixed condition. Fine.	Start bid 800
219	Group of 12x QV KE postal envelope with different size. All unused in mixed condition. Fine.	Start bid 1,200
220	1903 KE 5c and 10c postal envelope. The largest size thin grey paper. Unused. Fine.	Start bid 300
221	1900-03 QV KE wrappers All unused. Fine.	Start bid 600
222	1926 KGV 10c registered envelope, size G post to USA uprate KGV 10c tied by Reg. HK cds (18-Mar-1926) Fine.	Start bid 500







230

港幣起拍價

- 230 1879 cover from HK to New Zealand franked vertical wing margin pair 24c CC wmk overprint JM&Co firm tied by B62 killer. HK cds (29-Nov-1879) cds alongside, Back with NZ Gisborne and Auckland arrival cds. A good firm chop cover double rate to New Zealand.

Start bid 1,500



231



232



233



234



235

港幣起拍價

- 231 1900 registered cover from HK to Italy franked QV 10c red x2 tied but unclear date HK cds. Three Italy arrival marking on back. Fine. Start bid 600
- 232 1908 firm cover from HK to Canton franked KE 2c tied by HK cds (2-Nov-1908), back with Canton index A arrival cds (3-Nov-1908). A good printed matter rate cover to China. Start bid 600
- 233 Group of 4 KE KGV covers showing different rate franking, One KE cover with stamp missing. Mixed condition. Fine. Start bid 500
- 234 Group of 4 KGV covers all post USA with different stamp franking. One cover tied Sai Ying Pun branch cds, F-VF. Start bid 500
- 235 Two 1901 & 1904 incoming cover to HK and Canton, one with Singapore to HK cds at back. Another one with Canton index A arrival cds. Plus one KE 4c postal card to Japan and one Macau picture postcard. Fine. Start bid 500

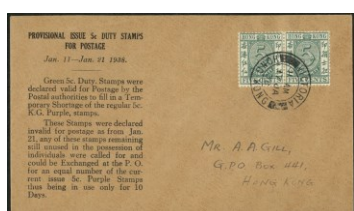


236

港幣起拍價

- 236 1921 cover from Russia Sibiria to Shanghai China franked Russia 3K x2 and 4K with pen cancelled, postage due T marking on front. Also, BPO TO GPO SHANGHAI box marking and Shanghai bilingual cds dated (22-Jan-21). Interesting cover.

Start bid 600



237



238



239



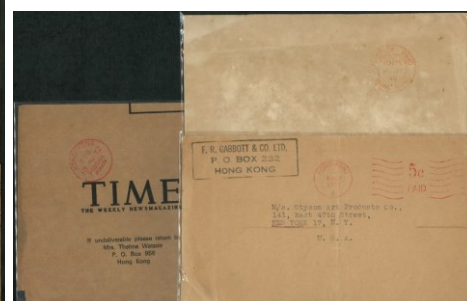
240



241



242



243

港幣起拍價

- 237 17-Jan-1938 postal fiscal 5c pair on cover postal local. VF. Start bid 400
- 238 13-Dec-1938 cover from Cheung Chau to USA franked KGVI 30c 50c \$ \$2 cancelled Cheung Chau type II cds. Cover fault on left. Fine. Start bid 600
- 239 4-Nov-1940 firm cover to USA franked KGVI 5c and 10c pair cancelled HK cds. British War Organization Fund label alongside. Fine and unusual. Start bid 600
- 240 Small group of 4 KGVI commercial covers. Included slogan marking. Fine. Start bid 500
- 241 Group of 4 KGV & KGVI commercial covers all post to USA with different stamps franking. Fine. Start bid 300
- 242 Small collection of HK covers with slogan marking and mobile PO chop. F-VF. Start bid 300
- 243 Three 40-70s postage paid marking commercial covers better with 1972 KSO Kowloon Sorting Office postage paid marking. Fine. Start bid 1,500





244



245



246



247

港幣起拍價

- |     |  |               |
|-----|--|---------------|
| 244 | 1953 incoming cover from France with postage due marking T0, 20. Back with HK postage due 20c black x2 cancelled HK cds (21-Oct-1953). VF. | Start bid 400 |
| 245 | Two 1960s used postal Administration cards plus 1988 OHMS cover with return letter office cds. Fine.                                       | Start bid 250 |
| 246 | 1971 HK Festival FDC franked 10c bisect stamp cancelled Mobile PO HK cds (2-Nov-1971). Unusual usage.                                      | Start bid 300 |
| 247 | Two 2017 Insurance cover post local another one Local courier post all with coil stamp franking. VF.                                       | Start bid 400 |

## Hong Kong – First Day Cover



248



249



250



251

港幣起拍價

- |     |   |               |
|-----|---|---------------|
| 248 | 1946 Two Victory FDC all post local. Fine.  | Start bid 300 |
| 249 | 1946 Victory FDC with large V design. Post local Fine.                                  | Start bid 300 |
| 250 | 1946 Victory FDC with large V design. Post to China with large K label. Fine.           | Start bid 300 |
| 251 | 1946 Victory FDC post local, Shum Shui Po cds and SSP overprint registered label. Fine. | Start bid 400 |



252



253



254



255



256



257



258



259



260

港幣起拍價

- |     |   |               |
|-----|---|---------------|
| 252 | 29-Aug-1946 Victory FDC post Canton China, stamps tied by Sheung Wan cds and SWB overprint registered label alongside. Cover back with HK transit and Canton arrival marking. | Start bid 400 |
| 253 | 1946 Two Victory FDCs one post to NSW with arrival marking at back. Fine.   | Start bid 350 |
| 254 | 1948 silver wedding 10c strip of 6 with toe N plate constant. Tied by 1 <sup>st</sup> day cds. Cover post to Transvaal, South Africa. Fine.                                   | Start bid 300 |
| 255 | 1949 UPU CPA FDC post to USA with arrival cds at back. Fine.  | Start bid 400 |
| 256 | 1949 UPU unusual design FDC post local to stamp dealer. Fine.   | Start bid 300 |
| 257 | Group of 8 50-60s Mobile Exhibition PO marking cover. F-VF.   | Start bid 300 |
| 258 | Group of 30 50-60s Mobile Exhibition PO marking cover. F-VF.  | Start bid 800 |
| 259 | 1962 Stamp Centenary set of 3 FDC, all stamps with sheet number. Fine.  | Start bid 250 |
| 260 | 1962 Stamp Centenary FDC, stamps tied by Aberdeen cds with same Reg. label. Fine.   | Start bid 200 |





261



262



263



264



265



266



267



268



269



270



271

港幣起拍價

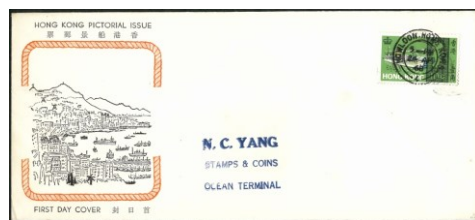
261	1962 Stamp Centenary FDC, stamps tied by Cheung Chau cds with same Reg. label. Fine.	Start bid 300
262	1962 Stamp Centenary FDC, stamps tied by Kowloon City cds with same Reg. label. Fine.	Start bid 200
263	1962 Stamp Centenary FDC, stamps tied by Ma Tau Wai cds with same Reg. label. Fine.	Start bid 200
264	1962 Stamp Centenary FDC, stamps tied by Mongkok cds with same Reg. label. Fine.	Start bid 200
265	1962 Stamp Centenary FDC, stamps tied by Peng Chau cds with same Reg. label. Fine.	Start bid 300
266	1962 Stamp Centenary FDC, stamps tied by Shatin cds, fine.	Start bid 250
267	1962 Stamp Centenary FDC, stamps tied by Sha Tau Kok cds with same Reg. label. Fine.	Start bid 300
268	1962 Stamp Centenary FDC, stamps tied by Sheung Wan cds with same Reg. label. Fine.	Start bid 200
269	1962 Stamp Centenary commemorative cover franked complete QEII set of 15 tied by large blue commemorative chop (12-Dec-1962) VF and rare complete set franking.	Start bid 1,500
270	1963 FFH GPO FDC with Secretariat cds with same Reg. label. Fine.	Start bid 200
271	1965 Churchill CPA FDC complete colour design. All with low values franking. F-VF.	Start bid 800



272



273



274



275



276



277



278



279



280



281



282

港幣起拍價

- |     |   |                 |
|-----|---|-----------------|
| 272 | 1967 Year of Ram FDC post to Singapore with arrival cds at back. Fine.  | Start bid 200   |
| 273 | 1968 HK Seacraft complete set on CPA orange colour design FDC. Post local. Stamps tied by Gillies Avenue with same branch Reg, label. Some toning around edge. Fine and scarce. | Start bid 2,000 |
| 274 | 1968 HK seacraft 10c value franking CPA orange colour FDC. VF.  | Start bid 500   |
| 275 | 1968 Coat of Arm set of 2 on CPA FDC. Post local. Fine.   | Start bid 400   |
| 276 | Group of 4 early 60-70s GPO FDCs. F-VF.   | Start bid 400   |
| 277 | 1969 Satellite CPA FDC post local. Fine.  | Start bid 350   |
| 278 | Group of 5 early 50-70s non-GPO FDCs. F-VF.   | Start bid 450   |
| 279 | Group of 5 1970 HK Productivity Year CPA FDCs. All different colour. F-VF.  | Start bid 500   |
| 280 | 1970 Expo 70, two CPA complete colour design. Fine.   | Start bid 250   |
| 281 | 1970 Year of Dog GPO FDC post to Singapore with arrival cds on back. Fine.  | Start bid 200   |
| 282 | Group of 4 early FDCs included 1937 coronation. Fine.   | Start bid 300   |





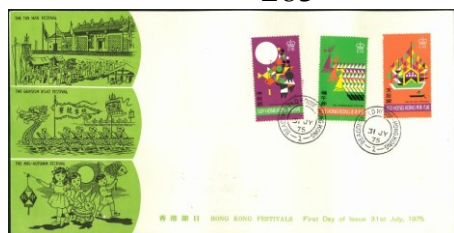
283



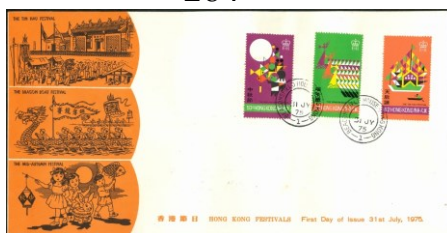
284



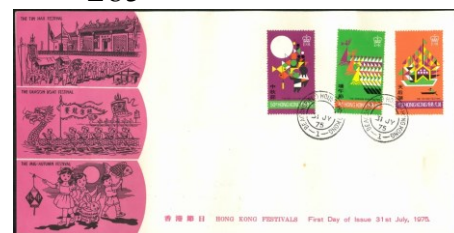
285



286



287



288



289



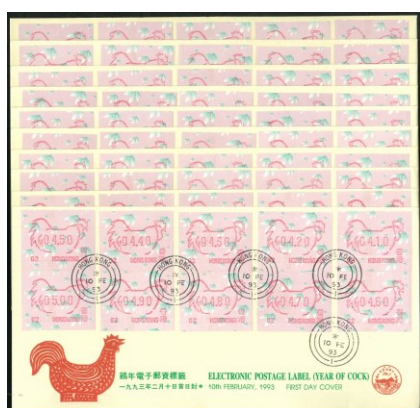
290



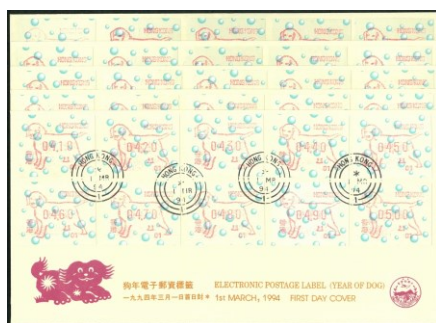
291

港幣起拍價

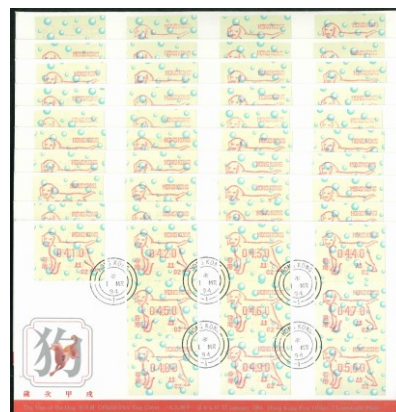
283	1971 Year of Pig GPO FDC post to Singapore with arrival cds at back. Fine.	Start bid 200
284	1973 Year of Ox CPA FDC x4. Complete colour set. VF.	Start bid 300
285	1973 HK Festival CPA FDC x4. Complete colour set. F-VF.	Start bid 300
286	1975 HK Festival CPA FDC. Green colour design. VF.	Start bid 500
287	1975 HK Festival CPA FDC. Orange colour design. VF.	Start bid 500
288	1975 HK Festival CPA FDC. Purple colour design. VF.	Start bid 500
289	1984 Chinese Lanterns CPA FDC postally used to local. Return to sender with instruction marking. Fine.	Start bid 500
290	29-June-1985 10 <sup>th</sup> International Dragon Boat Races 1 <sup>st</sup> day race FDCs x2. Stamp and MS franking. With original leaflet. Limited edition and only 25 FDCs made. FDC code 7/25. Scarce.	Start bid 400
291	1992 Year of Monkey 01 frame label complete 50 values on CPA FDCs. VF.	Start bid 400



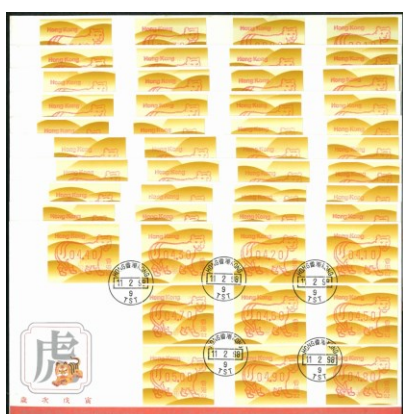
292



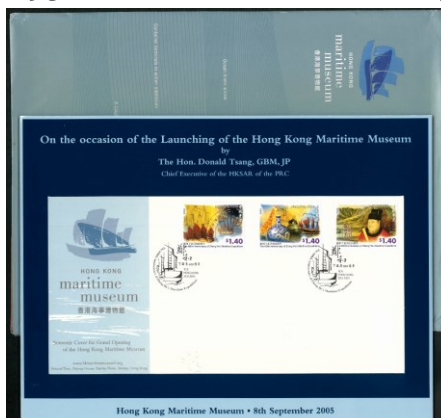
293



294



295



296

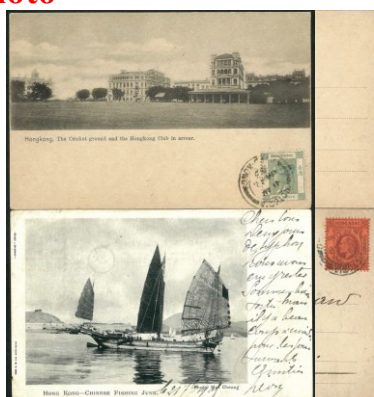
港幣起拍價

- |     |  |               |
|-----|--|---------------|
| 292 | 1993 Year of Cock 01 & 02 frame label complete 50 values on CPA FDCs. VF.  | Start bid 800 |
| 293 | 1994 Year of Dog 01 frame label complete 50 values on CPA FDCs. VF.  | Start bid 400 |
| 294 | 1994 Year of Dog 01 & 02 frame label complete 50 values on GPO FDCs. VF.   | Start bid 800 |
| 295 | 1998 Year of Tiger 01 & 02 frame label complete 50 values on GPO FDCs. VF.   | Start bid 800 |
| 296 | 2005 HK Maritime Museum limited edition FDC. 1 <sup>st</sup> day On the occasion of Launching of HK Maritime Museum by the Hon. Donald Tsang GBM JP. Scarce. | Start bid 500 |

## Hong Kong – Postcard & Real Photo



228



229



230

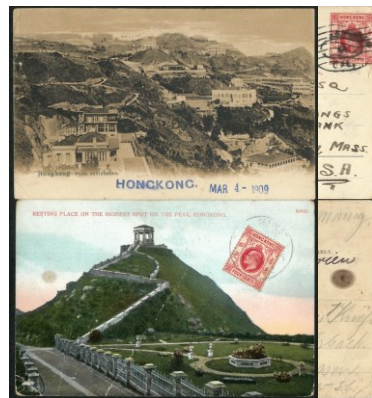
港幣起拍價

- |     |  |               |
|-----|--|---------------|
| 297 | 1902 early Happy Valley picture postcard post to UK, franked QV 4c tied by HK cds. Fine.                   | Start bid 250 |
| 298 | Two early picture postcards with QV 2c and KE 4c franking. F-VF.   | Start bid 300 |
| 299 | 22-Dec-1902 incoming picture postcard from UK to Canton franked KE 1p. Canton index B cds alongside. Fine. | Start bid 200 |





300



301



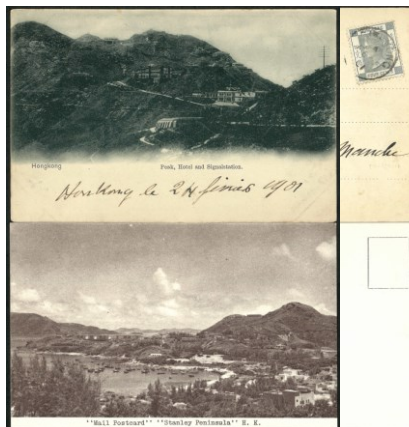
302



303



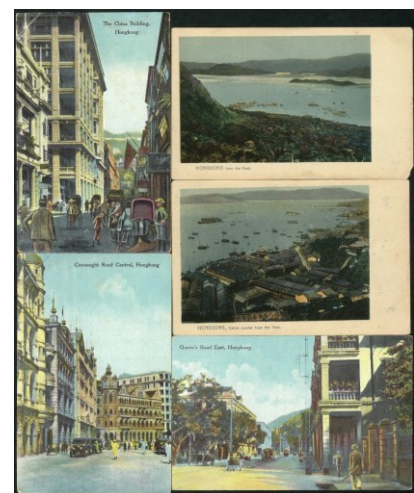
304



305



306

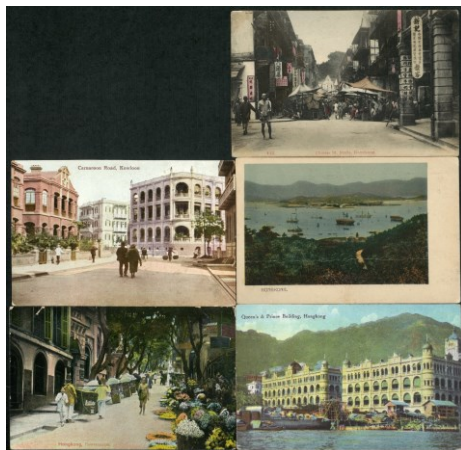


307

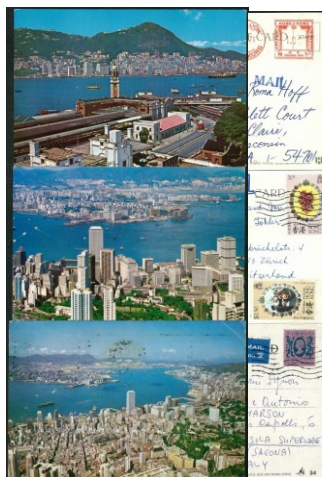
港幣起拍價

- |     |   |               |
|-----|---|---------------|
| 300 | 1909 Chinese Pagoda postcard franked KE 4c tied by Liu Kung Tau index B cds (15-June-1909). Fine.   | Start bid 300 |
| 301 | 1909 HK picture postcard to USA franked KE 4c tied by Sanfansico Cal ship marking. Also one HK postcard to Germany franked KE 4c tied by unclear Deutsche seepost cds. (card creased) Fine. | Start bid 500 |
| 302 | Two early picture postcards issued by KM & Co. Both unused. Fine.   | Start bid 400 |
| 303 | Group of 4 early picture postcards all postally used with KE stamp franking. F-VF.  | Start bid 500 |
| 304 | Two early postcards showing Macau scene, one franked HK KE 4c and another one with Macau stamp. Fine.   | Start bid 400 |
| 305 | Two early picture postcards one postally used to France with QV 4c tied by HK cds. Fine.  | Start bid 300 |
| 306 | Group of 3 early picture postcards all postally used with KE 4c franking. F-VF.   | Start bid 350 |
| 307 | Group of 5 early picture postcards all un-post. But with HK APO force soldier message on back. Fine.  | Start bid 350 |





308



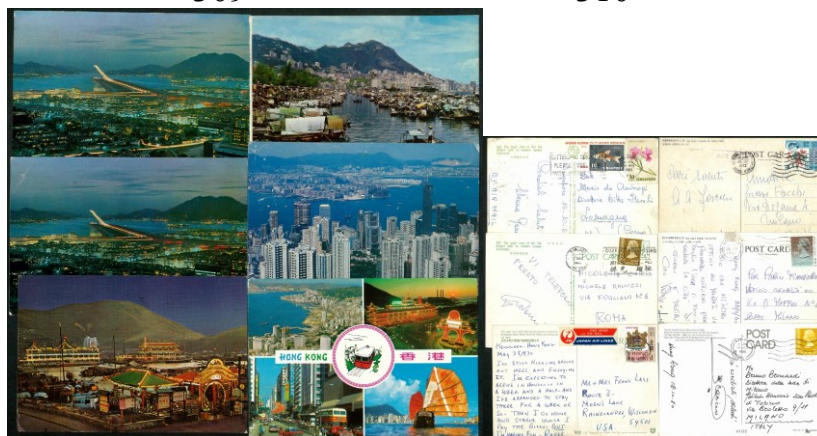
309



310



311



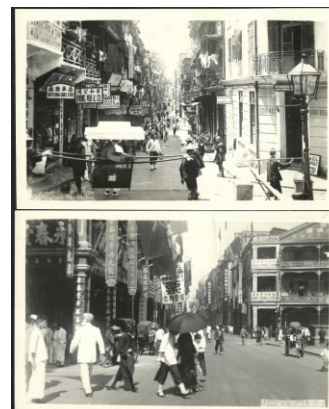
312



313



314



315

港幣起拍價

308	Group of 5 early picture postcards all unpost. But with HK APO force soldier message on back. Fine.	Start bid 350
309	70-80s HK picture postcard all postally used. One with meter N317 PP. VF.	Start bid 250
310	Two early HK picture postcard 1961 & 1971 all postally used. F-VF.	Start bid 250
311	1970 HK picture postcard showing Shum Shui PO Pei ho street. Card post to Italy. VF.	Start bid 200
312	Group of 6 HK picture postcards, 70-80s all postally used. F-VF.	Start bid 350
313	Two 1930-40s real photo postcards. Both unused showing HK building. Fine.	Start bid 550
314	1940 HK real photo postcard showing Des Voeux Road. VF unused.	Start bid 300
315	1930s HK real photo postcards showing HK street scene. Both unused. VF.	Start bid 400





316



317



318



319



320



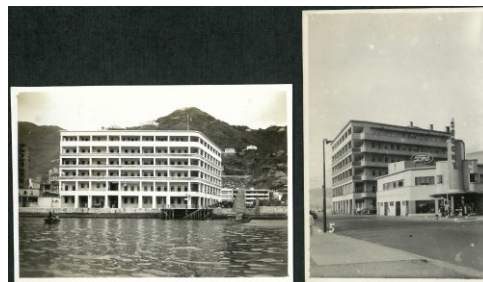
321



322



323



324



325

港幣起拍價

- |     |  |               |
|-----|--|---------------|
| 316 | Group of 4 1940-50s HK real photo postcards all unused. F-VF.  | Start bid 300 |
| 317 | 1932 real photo postcard post to USA franked KGV 8c tied HK cds. Fine.                                 | Start bid 300 |
| 318 | 1954 hand tinted real photo postcard post to UK. Franked QEII 50c. Vertical folded. Fine.              | Start bid 250 |
| 319 | 1940 real photo postcard showing HK Pottinger street. Unused with British soldier message at back. VF. | Start bid 300 |
| 320 | 1940s real photo 8.5x6cm showing <b>junction of Johnston and Hennessy road Wanchai</b> . VF.           | Start bid 250 |
| 321 | 1940s real photo 8.5x6cm showing <b>train in Johnston Road Wanchai</b> . VF.                           | Start bid 200 |
| 322 | 1940s real photo 8.5x6cm showing <b>Ying King restaurant Johnston road Wanchai</b> . VF.               | Start bid 250 |
| 323 | 1940s real photo 8.5x6cm showing train in <b>Hennessy Road Wanchai</b> . VF.                           | Start bid 250 |
| 324 | 1940s two real photos 8.5x6cm showing <b>China Fleet Club</b> building. VF.                            | Start bid 250 |
| 325 | 1940s real photo 8.5x6cm showing <b>Alhambra Cinema in Nathan road</b> . VF. Rare.                     | Start bid 250 |



326



327



328



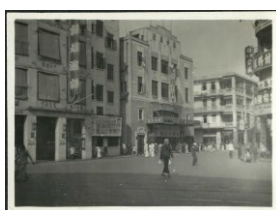
329



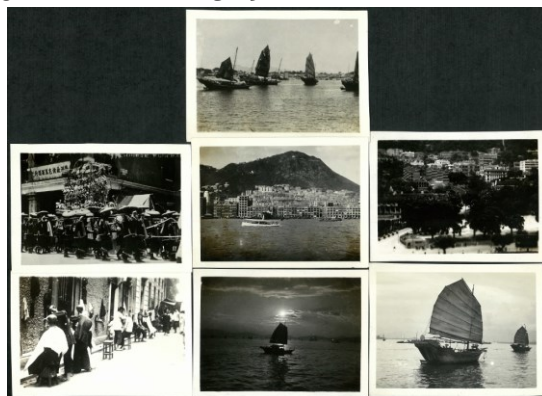
330



331



332

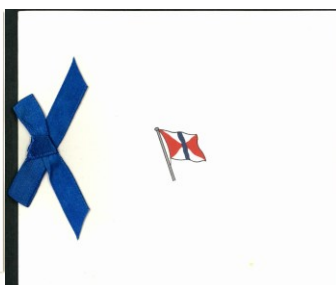


333



334

General View of Refinery (1952)



335

港幣起拍價

326	1940s real photo 8.5x6cm showing <b>Merchant Seamen's Hotel in Gloucester Road</b> . VF.	Start bid 250
327	1940s real photo 8.5x6cm showing <b>Alhambra Theatre</b> in Nathan road. VF. Rare.	Start bid 200
328	1940s real photo 8.5x6cm showing <b>Cathay Theatre</b> in Wanchai Road. VF. Rare.	Start bid 250
329	1940s real photo 8.5x6cm showing <b>Majestic Theatre in Nathan road</b> . VF. Rare.	Start bid 250
330	1940s real photo 8.5x6cm showing <b>Central Theatre in Kennedy Town</b> . VF. Rare.	Start bid 250
331	1940s real photo 8.5x6cm showing <b>Star Theatre and Balalaika Restaurant in Hankow road</b> . VF. Rare.	Start bid 250
332	1940s real photo 8.5x6cm showing <b>Oriental Theatre in Fleming Road Wanchai</b> . VF. Rare.	Start bid 250
333	1940s real photo 8.5x6cm x7 showing different HK scenes. VF.	Start bid 250
334	1952 Tai Koo Sugar Ltd commemorative card folder with 11x8.5cm real photo showing general view of sugar refinery. VF. Scarce.	Start bid 350
335	Group of 23x real photo or advertising card showing famous star of Hong Kong. Fine.	Start bid 300



## Hong Kong – Collections



336



337



338



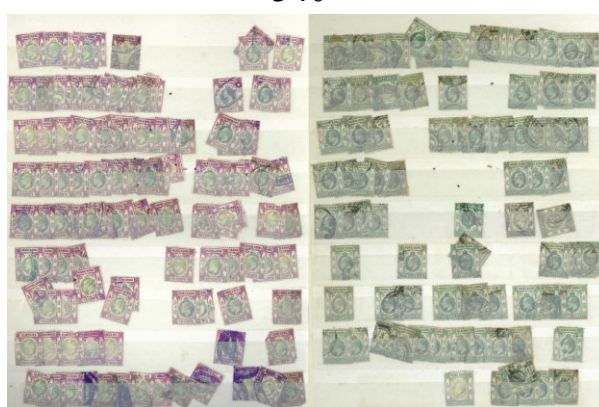
339



340



341



342

港幣起拍價

- |     |  |                 |
|-----|--|-----------------|
| 336 | Small collection of mint stamps from KGV to later postage due and revenue issue. Better included 1921 KGV 50c olive back. Most VF original gum. High catalogue value.      | Start bid 600   |
| 337 | Small collection of minor error or plate flaw. All unused. Mixed condition. Fine.  | Start bid 350   |
| 338 | Hong Kong mint and used collection in album pages included early mint commemorative sets and definitive mint and use to later QEII issue. F-VF. High CV.                   | Start bid 500   |
| 339 | Collection of classic treaty port postmarks from AMOY and CANTON better included C1 killer (3) and different type Amoy. Canton cds. mixed conditions. Viewing recommended. | Start bid 1,000 |
| 340 | Collection of classic Shanghai treaty port postmark included different type S1 killer and various type cds. F-VF. Viewing recommended.                                     | Start bid 700   |
| 341 | Collection of early commemorative issues all UM. Some sets toning. Mainly VF.  | Start bid 900   |
| 342 | Heavy duplicate collection of used KE holds in one album. All used values from 1c to \$2. Some postmark interests. All high value fiscally used. Mixed condition.          | Start bid 600   |





343



344



345



346



347



348



349

港幣起拍價

- |     |  |               |
|-----|--|---------------|
| 343 | Heavy duplicate collection of used KE KGV holds in stock cards. All used values from 1c to \$5. Some postmark interests. Mixed condition.  | Start bid 700 |
| 344 | Heavy duplicate collection of used overprint China holds in one album. All used values from 1c to \$3. Some postmark interests. All high value fiscally used. Mixed condition.   | Start bid 600 |
| 345 | Heavy duplicate collection of used KGVI holds in one album. All used values from 1c to few \$10. Some postmark interests. Also included few commemorative issue Mixed condition. | Start bid 500 |
| 346 | Small HK collection definitive and commemorative issue. All mint. From early to modern.  | Start bid 300 |
| 347 | Collection of 70s to 2000s commemorative issue. All UM. Mixed condition.   | Start bid 400 |
| 348 | Small collection of modern new issue, MS or B/4. Face values around HK\$890.   | Start bid 500 |
| 349 | Small collection of early covers and mint and used commemorative issues. Fine.   | Start bid 250 |





350



351



352



353

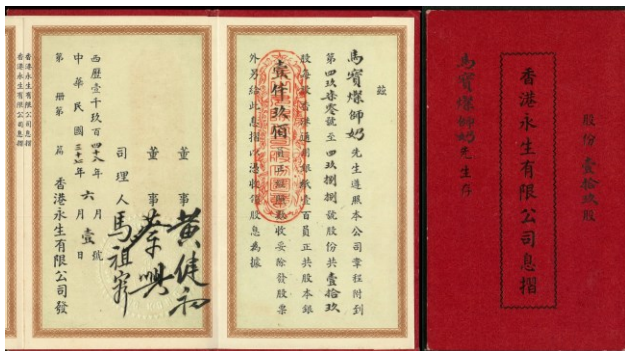


354

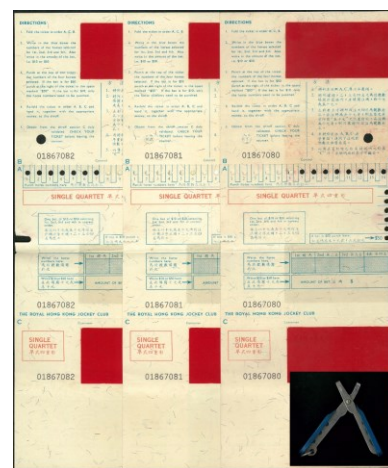
港幣起拍價

- |     |   |               |
|-----|---|---------------|
| 350 | Collection of HK definitive stamp pack plus a few early FDCs. F-VF.                               | Start bid 600 |
| 351 | Collection of HK Maximum cards or stamp pack plus few used stamps and FDCs. Mixed condition.      | Start bid 200 |
| 352 | Collection of Macau and HK revenue documents. Around 11 items from 1910s to 50s. Fine.            | Start bid 400 |
| 353 | Collection of QEII revenue holds on one album. Heavy duplicate. Mainly used. Viewing recommended. | Start bid 700 |
| 354 | Collection of 80s stock exchange receipt all franked revenues 100s pieces. F-VF.                  | Start bid 500 |

## Miscellaneous Items



355



356

港幣起拍價

- |     |  |               |
|-----|--|---------------|
| 355 | 1948 HK Wing Sang bank stock interest bank book. VF.   | Start bid 200 |
| 356 | 1960-70s Royal HK Jockey Club single quartet ticket x3. All unused with original pin hold tool. Interesting items. | Start bid 600 |



## WorldWide



357



358



359



360



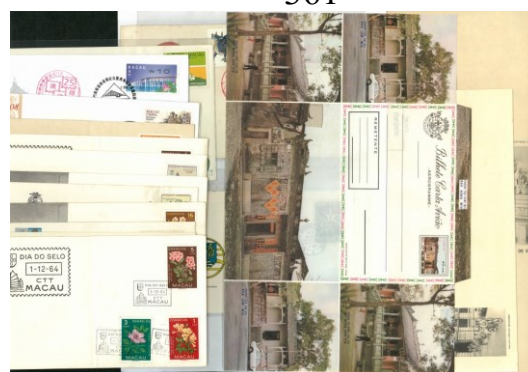
361



362



363

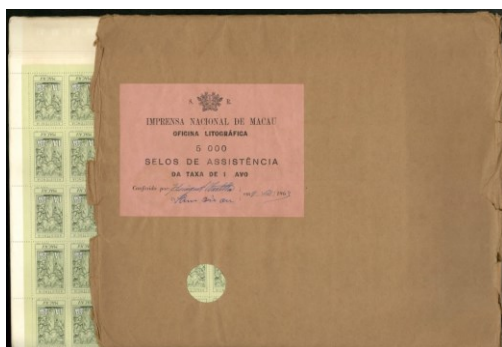


364

港幣起拍價

- |     |  |               |
|-----|--|---------------|
| 357 | Collection of early Taiwan mint and used in stock card. Included limited use in Taiwan overprint and commemorative issue. F-VF. Viewing recommended. | Start bid 500 |
| 358 | Taiwan 1962 Chinese Painting set of 4. Mint hinge original gum light toning. Fine set.   | Start bid 600 |
| 359 | Small collection mint and used Taiwan, album pages, stamp set. Booklet or MS. F-VF.  | Start bid 300 |
| 360 | Macau 1902 overprint set of 13 on Carlos I. Mint. F-VF.  | Start bid 500 |
| 361 | Macau 1898 1 <sup>st</sup> commemorative set of 8. Mint hinged OG even toning. Fine.   | Start bid 300 |
| 362 | Macau 1938 early picture post to USA franked 12a tied by Macau postmark (14-Oct-1938). Fine.   | Start bid 300 |
| 363 | Macau 1974 revolution 10a block of 4 showing colour shift variety. Unused no gum. Scarce.  | Start bid 500 |
| 364 | Macau collection of FDCs and aerogrammes. From 60s. F-VF.  | Start bid 250 |





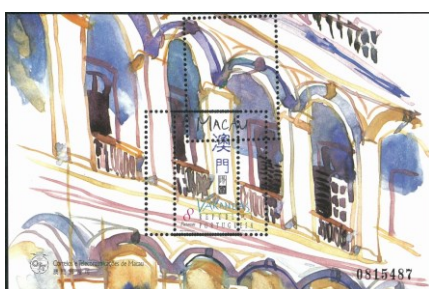
365



366



367



368



369



370



371



372



373



374

港幣起拍價

- |     |  |                 |
|-----|--|-----------------|
| 365 | 1961 Charity Tax Stamp 1A original pack of 50 sheets (5000 stamps) original seal pack with signed IMPRENSA NACIONAL DE MACAU label. Unusual. (CV HK\$50,000) | Start bid 5,000 |
| 366 | Macau two early commemorative set, complete sheet of 100 each.UM with some toning spot. F-VF.  | Start bid 800   |
| 367 | Modern Macau stamp issue in complete sheet or MS. All VF UM.   | Start bid 200   |
| 368 | Macau 1997 Varandas 8P MS showing extra perf. variety. VF UM. Scarce.  | Start bid 600   |
| 369 | Macau 2015-18 ATM label 5 complete sets. Fresh UM.   | Start bid 300   |
| 370 | Macau 2015-2016 Year of Ram and Cock ATM label complete sets. Fresh UM.  | Start bid 300   |
| 371 | Macau 2018 Stamp Exhibition ATM labels two complete sets. Fresh UM.  | Start bid 300   |
| 372 | 1840 GB penny black 1p N-L three and half margins, tied by black Maltese killer. Fine.   | Start bid 400   |
| 373 | 1840 GB penny black 1p E-J 4 margins, tied by black Maltese killer. Small thin. Fine.  | Start bid 500   |
| 374 | 1957 GB to France cover with GB1F60c marking. Also 1959 cover from HK to USA with HK cds. London arrival chop. Cover damaged. Fine.                          | Start bid 500   |





375



376

375 Collection of CEF overprint mint and used in stock card. Mainly mint OG. High CV. Viewing recommended.

港幣起拍價

Start bid 500

376 Small collection of Hungary stamps mint and used in small album. F-VF.

Start bid 200

## China



377



378



379



380

377 China imperial to ROC mint and used collection in 2 stock cards. Included small dragon mint and used, local post and dowager issue, F-VF. Viewing recommended. 大清新票及旧票邮集 1 份。包括上海书信馆及小龙新旧票。上品。

港幣起拍價

Start bid 800

378 Small China imperial & ROC stamps collection in stock card. From small dragon to coiling dragon values to \$2. Some postmark interests. F-VF. 大清至民国小龙及蟠龙新旧票 1 份至 2 元。包括一些好戳。上品。

Start bid 600

379 Collection of coiling dragon stamps all used in one stock card. Total 80 stamps. F-VF. 蟠龙旧票 80 枚。包括一些好戳。上品。

Start bid 700

380 Collection of China from imperial to PRC issue. Mint and used. Viewing recommended. 大清至新中国新旧票邮集 1 份。包括书信馆及满州票。上品。

Start bid 300





381



382



383



384



385



386



387



388

港幣起拍價

- |     |   |                 |
|-----|---|-----------------|
| 381 | Collection of China PRC used or CTO in one album. Mainly fine, few Taiwan stamps. Viewing recommended. 新中国纪特 JT 及编年旧票或盖销票邮集 1 本。上品。 | Start bid 600   |
| 382 | Collection of China PRC R issue all identify town cds. Many clear postmarks. Viewing recommended. 新中国普票邮集 1 份。全部销不同地方戳。上品。          | Start bid 500   |
| 383 | China PRC mint collection mainly C, J, T and modern issue 68 sets. Some toning. Fine. 新中国纪 JT 及编年票 68 套。部份有黄。上品。                    | Start bid 700   |
| 384 | Collection of modern China PRC stamp sets. B/4 or MS. All fresh UM. High face value. 新中国近代编年票。方连小型张及小版张。面值高。全品。                     | Start bid 700   |
| 385 | 1897 red revenue 1c/3c mint original gum. VF. 1897 红印花 1 分新票 1 枚。原胶上品。  | Start bid 1,200 |
| 386 | 1897 red revenue 1c/3c mint original gum. VF. 1897 红印花 1 分新票 1 枚。原胶上品。  | Start bid 1,100 |
| 387 | 1897 red revenue small 2c/3c mint original gum. Toning OG. Fine. 1897 红印花小 2 分新票 1 枚。原胶有黄点。上品。                                      | Start bid 1,200 |
| 388 | Group of 9 imperial coiling dragon with some postmark interest. Fine. 清蟠龙旧票 9 枚。包括一些好戳。上品。  | Start bid 200   |





389



390



391



392



393



394



395



396



397



398

港幣起拍價

- |     |   |               |
|-----|---|---------------|
| 389 | 1912 ROC overprint on coiling dragon 2c Fresh mint never hinge original gum. VF. 1912 蟠龙加盖 2 分 中华民国。丰厚原胶。无贴上上品。   | Start bid 500 |
| 390 | 1912 ROC overprint on coiling dragon 20c Fresh mint never hinge original gum. VF. 1912 蟠龙 2 角新票 1 枚。丰厚原胶。无贴上上品。   | Start bid 250 |
| 391 | 1911 Tibet overprint 2c/4c fresh mint never hinge original gum. VF. 1911 西藏蟠龙 2 分改值新票 1 枚。丰厚原胶。无贴上上品。   | Start bid 300 |
| 392 | Small collection of 2 commemorative CTO sets plus BRA 5c overprint used. F-VF. 民国纪念票 2 套。盖销迪化戳。及蟠龙 5 分改值 B. R. A. 旧票 1 枚。上品。  | Start bid 700 |
| 393 | ROC limited use in Mongolia surcharge stamp mint and used. Fine. 民国蒙疆改值新旧票 1 份。上品。  | Start bid 200 |
| 394 | Group of 3 imperial to ROC official seal label. Two unused and one used. Fine. 大清至民国邮局代封 3 枚。其中 1 枚已使用。上品。  | Start bid 300 |
| 395 | Imperial China official label used with Mengtsz bilingual cds plus one Manchukuo official seal label postally used. Unusual. 大清邮局代封纸 1 枚。销蒙自小圆印。及满州帝国封条纸 1 枚。销日式戳。上品。 | Start bid 300 |
| 396 | ROC Express stamp original strip of 5, Unused. VF. 1912 中华民国加紧信件 5 连原条。未使用新票。上品。  | Start bid 800 |
| 397 | ROC Express stamp original strip of 5 with overprint city name. Unused. VF. 1912 中华民国加紧信件 5 连原条。加字三界 1 地区名。未使用新票。上品。  | Start bid 800 |
| 398 | ROC Express stamp original strip of 5. Unused. VF. 1920 年代中华民国快递原条未使用新票。上品。   | Start bid 400 |





399



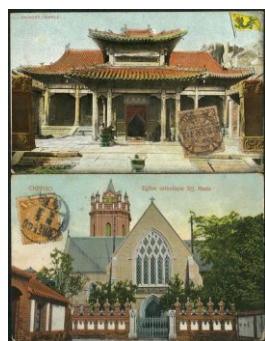
400



401



402



403



404



405

港幣起拍價

- |     |   |               |
|-----|---|---------------|
| 399 | 1964 C106 CTO imprint margin set. Fresh OG UM. 新中国纪 106 带角位厂铭盖销。上品。   | Start bid 250 |
| 400 | T58 two sets. One UM and other set mint hinged. F-VF. 新中国 T58 2 套。1 套为全部。另 1 套有贴印。上品。   | Start bid 250 |
| 401 | PRC group of 17 stamp booklets. VF. 新中国小本票 17 本。上品。   | Start bid 400 |
| 402 | 1889 German office in China postal card 10p tied by KAISERLICH SHANHGAI cds. Mixed franking with small dragon 1c & 3c <b>but not originally belong</b> . Back with Custom Shanghai and Tientsin cds plus rare I G OF CUSTOM PEKING marking. 德国客邮 10p 邮资片 1 件。销德国上海印。原票已掉。后贴有小龙 1 分及 3 分。背有上海及天津海关印及罕有 I. G. OF CUSTOMS 北京圆印。上品。 | Start bid 500 |
| 403 | Two imperial picture postcards franked CIP stamp. CTO lunar year cds. Fine. 大清明信片 2 件。贴蟠龙票盖销。上品。  | Start bid 300 |
| 404 | Group of 4 cutting stamps art postcard. All unused with HK APO soldier message at back. Fine. 民国邮票艺术明信片 4 件。未使用。全部有香港军人手写讯息在背面。上品。  | Start bid 300 |
| 405 | Collection of China postcard and real photo postcards some postally used. Mixed condition. Total 14 pieces. 大清至民国明信片及相片明信片共 14 件。部份实寄。上品。   | Start bid 600 |

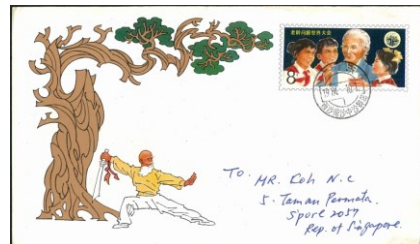




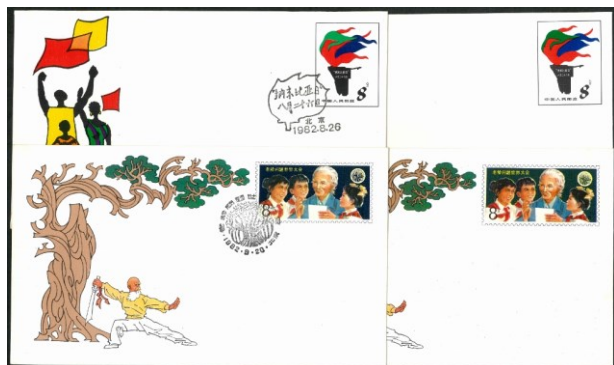
406



407



408



409



410

港幣起拍價

- |     |  |                 |
|-----|--|-----------------|
| 406 | ROC covers and FDCs total 4 items Fine. 民国实寄封及首日封共 4 件。上品。   | Start bid 550   |
| 407 | PRC C71 FDC. Tied by red commemorative postmark. Some toning spots. Fine. 新中国纪 71 首日封 1 件。有黄上品。  | Start bid 1,200 |
| 408 | 1982 JF 2 postal envelope 8c postally used to Singapore. Uprate stamps at back Fine. 1984 老 龄 8 分邮资片 1 件。实寄新加坡。加贴 J83 一套在背面。销广东西沙南沙中沙群岛 戳。上品。  | Start bid 500   |
| 409 | 1982 JF 1 JF 2 postal envelope unused and CTO set. VF. 1982 JT1 及 JT2 邮资封新及盖 销各一套。上品。  | Start bid 300   |
| 410 | Collection of PRC culture revolution art covers x28 items hold in 28x A4 pages well present rate and route. Viewing recommended. 70 年代文化大革命时期实寄美术封共 28 件。贴于 28 张 A4 展览咭上。详细说明邮资及邮路。上品。 | Start bid 2,000 |

## Banknotes



411



412



413

港幣起拍價

- |     |  |               |
|-----|--|---------------|
| 411 | China PRC 1953 2 <sup>nd</sup> issue \$2, II VIII III 6139803. VF.             | Start bid 600 |
| 412 | Hong Kong 1988 1993 & 1997 coin packs. UNC.                                    | Start bid 800 |
| 413 | Hong Kong 1993 proof coin set. Original box. Fine with toning spot on packing. | Start bid 250 |





414



415



416



417



418



419

港幣起拍價

414	Hong Kong Government \$1 (ND 1936) PMG 45 EPQ.	Start bid 400
415	Hong Kong Government \$1 (ND 1940-41) PMG 64 EPQ.	Start bid 300
416	Hong Kong Bank 1955 \$10 PMG 45 EPQ.	Start bid 300
417	Hong Kong Bank 1970 \$100 VB321669. VF.	Start bid 200
418	HK Chartered Bank 1959 \$5 PMG 55 & 1959 \$10 PMG 58.	Start bid 950
419	HK Chartered Bank \$50 PMG 53.	Start bid 500

~ End of Auction ~

51<sup>st</sup> Public Auction (Live auction)

End of May 2025

~ Please contact HKPNC for consignment ~

# TERMS OF SALE

1. Hong Kong Philatelic & Numismatic Company Limited (HKPNC) is acting as agent for the respective sellers of the lots in the auction. All lots are offered subject to a starting price, bids lower than starting price will not be accepted.
2. Estimates (starting price) have been given for all lots in this auction. They are meant to reflect our idea of the current market value of the item given its scarcity and condition.
3. The highest bidder acknowledged by HKPNC shall be the buyer. A buyer's premium of 15% shall be added to the hammer price of each lot.
4. Postal Bid Forms should be sent to be received by our office before 24:00 auction day. No 'UNLIMITED' or 'BUY BID' or 'AT BEST' 'HIGHEST' will be accepted. Local & oversea Clients may bid by email or HKPNC's mobile APPS.
5. All lots will be sold to the highest bidder. Successful bidder will be awarded the lot only at a nominal advance over the next highest bid. Extension of lots should be noted on bid forms. For lots that requested extension, HKPNC will submit the item to a mutually acceptable expertise, providing that: 1) The lot will be paid for in full plus all charges for expertizing, including postage, mail registration, insurance and handling at the time of purchase, and 2) The expertise can provide a written opinion within 90 days of the auction date and will be delay for waiting more expert's opinion. All costs and charges for expertization are the sole responsibility and liability of the buyers. All cost for any fail opinion certification is the responsibility of the Vendor.
6. The lots offered in the auction catalogue can be inspected by potential bidders prior to the auction at public viewing as set forth in the auction catalogue. Viewers will be responsible for any damage caused by them in the viewing.
7. The buyer agrees to pay all shipping and handling costs. It is solely the buyer's responsibility to notify HKPNC of any special shipping instructions. In the case of tie bids or any other disputes arising, HKPNC's decision will be final.
8. All invoices are payable in Hong Kong dollars. Payment in any other currencies will not be accepted unless prior arrangements have been made, with such payment to include all additional bank charges. All foreign currency personal cheques and Euro cheques will not be accepted. A standard HK\$300 shipping/handling fee per shipment of purchase will be charged, there will be additional charges for carton lot shipments. Overseas buyers must furnish their own insurance during shipment.
9. Payment of lots is due within 20 days from the auction date, except in the case of postal or other bids that HKPNC executes on behalf of bidders do not present at the auction, such payment is due on presentation of HKPNC's invoice for the lots. Lots will not be given or sent to buyers until payment in full.
10. All invoices that are not paid within 30 days after the auction shall be subject to a 5% late fee and shall also bear interest at the rate of 1% per month from the date of the auction. If lots are not paid for in full within 30 days after the auction, HKPNC shall have the right to exercise one or more of the following rights and remedies: (a) to cancel the sale, (b) to resell the lots at public or private sale, with the defaulting buyer to be responsible for any loss from the resale and all costs and expenses in connection therewith, (c) to apply any amounts received from the buyer or owing to the buyer from HKPNC Auctions against the amounts owing to HKPNC Auctions, or (d) to sue the buyer for breach of contract. The buyer shall be responsible for all costs and expenses, including legal fees and collection costs, incurred by HKPNC in collecting on defaulted invoices and delinquent accounts.
11. All bidders will not be granted any return privileges. It is presumed that all floor bidders have inspected the lots prior to bidding. Therefore, lots purchased by floor bidders are sold "AS IS" and may not be returned. All lots containing more than two items may not be returned under any circumstances.
12. The bidder is responsible for any lots returned until received by HKPNC.
13. HKPNC's shall not be liable for any errors or omissions in executing instructions made by the bidder or seller. The bidder who bids in the auction agrees to accept and abide by all the foregoing terms and conditions of sale and personally guarantees payment in full.
14. The respective rights and obligations of the parties shall be governed and construed by Laws of Hong Kong.



## 49<sup>th</sup> Auction Result (30<sup>th</sup> April 2025)

49th Auction

Lot#	Sold	15% (\$)	Lot#	Sold	15% (\$)	Lot#	Sold	15% (\$)	Lot#	Sold	15% (\$)	Lot#	Sold	15% (\$)	Lot#	Sold	15% (\$)
1	\$750	\$863	46	\$500	\$575	91	\$300	\$345	136	\$0	\$0	181	\$1,000	\$1,150	226	\$400	\$460
2	\$600	\$690	47	\$1,700	\$1,955	92	\$700	\$805	137	\$400	\$460	182	\$1,000	\$1,150	227	\$0	\$0
3	\$6,000	\$6,900	48	\$1,900	\$2,185	93	\$300	\$345	138	\$750	\$863	183	\$400	\$460	228	\$0	\$0
4	\$0	\$0	49	\$1,400	\$1,610	94	\$350	\$403	139	\$0	\$0	184	\$1,400	\$1,610	229	\$350	\$403
5	\$5,000	\$5,750	50	\$450	\$518	95	\$850	\$978	140	\$400	\$460	185	\$700	\$805	230	\$0	\$0
6	\$0	\$0	51	\$1,400	\$1,610	96	\$550	\$633	141	\$450	\$518	186	\$0	\$0	231	\$0	\$0
7	\$0	\$0	52	\$0	\$0	97	\$650	\$748	142	\$600	\$690	187	\$2,700	\$3,105	232	\$0	\$0
8	\$750	\$863	53	\$400	\$460	98	\$0	\$0	143	\$450	\$518	188	\$350	\$403	233	\$0	\$0
9	\$850	\$978	54	\$0	\$0	99	\$600	\$690	144	\$500	\$575	189	\$0	\$0	234	\$450	\$518
10	\$2,400	\$2,760	55	\$0	\$0	100	\$1,400	\$1,610	145	\$0	\$0	190	\$0	\$0	235	\$0	\$0
11	\$550	\$633	56	\$0	\$0	101	\$300	\$345	146	\$450	\$518	191	\$0	\$0	236	\$350	\$403
12	\$400	\$460	57	\$0	\$0	102	\$400	\$460	147	\$700	\$805	192	\$0	\$0	237	\$350	\$403
13	\$500	\$575	58	\$0	\$0	103	\$0	\$0	148	\$400	\$460	193	\$550	\$633	238	\$850	\$978
14	\$1,400	\$1,610	59	\$0	\$0	104	\$350	\$403	149	\$600	\$690	194	\$300	\$345	239	\$250	\$288
15	\$400	\$460	60	\$500	\$575	105	\$400	\$460	150	\$0	\$0	195	\$0	\$0	240	\$950	\$1,093
16	\$400	\$460	61	\$600	\$690	106	\$650	\$748	151	\$400	\$460	196	\$350	\$403	241	\$0	\$0
17	\$1,400	\$1,610	62	\$600	\$690	107	\$250	\$288	152	\$0	\$0	197	\$0	\$0	242	\$0	\$0
18	\$35,500	\$40,825	63	\$600	\$690	108	\$900	\$1,035	153	\$400	\$460	198	\$400	\$460	243	\$350	\$403
19	\$450	\$518	64	\$700	\$805	109	\$0	\$0	154	\$0	\$0	199	\$500	\$575	244	\$700	\$805
20	\$2,100	\$2,415	65	\$550	\$633	110	\$1,200	\$1,380	155	\$0	\$0	200	\$6,400	\$7,360	245	\$300	\$345
21	\$7,600	\$8,740	66	\$400	\$460	111	\$1,200	\$1,380	156	\$850	\$978	201	\$300	\$345	246	\$1,200	\$1,380
22	\$12,500	\$14,375	67	\$300	\$345	112	\$600	\$690	157	\$0	\$0	202	\$500	\$575	247	\$650	\$748
23	\$1,600	\$1,840	68	\$1,800	\$2,070	113	\$0	\$0	158	\$0	\$0	203	\$1,100	\$1,265	248	\$400	\$460
24	\$500	\$575	69	\$1,500	\$1,725	114	\$550	\$633	159	\$1,100	\$1,265	204	\$350	\$403	249	\$0	\$0
25	\$600	\$690	70	\$350	\$403	115	\$0	\$0	160	\$0	\$0	205	\$350	\$403	250	\$0	\$0
26	\$0	\$0	71	\$0	\$0	116	\$350	\$403	161	\$2,200	\$2,530	206	\$750	\$863	251	\$400	\$460
27	\$0	\$0	72	\$400	\$460	117	\$0	\$0	162	\$600	\$690	207	\$1,700	\$1,955	252	\$0	\$0
28	\$850	\$978	73	\$400	\$460	118	\$550	\$633	163	\$450	\$518	208	\$400	\$460	253	\$0	\$0
29	\$0	\$0	74	\$350	\$403	119	\$350	\$403	164	\$400	\$460	209	\$0	\$0	254	\$300	\$345
30	\$0	\$0	75	\$350	\$403	120	\$400	\$460	165	\$950	\$1,093	210	\$550	\$633	255	\$350	\$403
31	\$300	\$345	76	\$350	\$403	121	\$400	\$460	166	\$0	\$0	211	\$0	\$0	256	\$200	\$230
32	\$500	\$575	77	\$0	\$0	122	\$1,300	\$1,495	167	\$0	\$0	212	\$250	\$288	257	\$550	\$633
33	\$1,000	\$1,150	78	\$6,800	\$7,820	123	\$350	\$403	168	\$0	\$0	213	\$550	\$633	258	\$0	\$0
34	\$0	\$0	79	\$750	\$863	124	\$0	\$0	169	\$2,100	\$2,415	214	\$450	\$518	259	\$450	\$518
35	\$4,100	\$4,715	80	\$350	\$403	125	\$0	\$0	170	\$4,300	\$4,945	215	\$0	\$0	260	\$400	\$460
36	\$1,000	\$1,150	81	\$250	\$288	126	\$400	\$460	171	\$24,000	\$27,600	216	\$250	\$288	261	\$300	\$345
37	\$3,100	\$3,565	82	\$300	\$345	127	\$0	\$0	172	\$11,500	\$13,225	217	\$800	\$920	262	\$350	\$403
38	\$400	\$460	83	\$300	\$345	128	\$250	\$288	173	\$0	\$0	218	\$3,300	\$3,795	263	\$350	\$403
39	\$800	\$920	84	\$450	\$518	129	\$0	\$0	174	\$650	\$748	219	\$500	\$575	264	\$0	\$0
40	\$1,000	\$1,150	85	\$450	\$518	130	\$600	\$690	175	\$950	\$1,093	220	\$750	\$863	265	\$400	\$460
41	\$1,100	\$1,265	86	\$350	\$403	131	\$2,600	\$2,990	176	\$350	\$403	221	\$650	\$748	266	\$400	\$460
42	\$900	\$1,035	87	\$300	\$345	132	\$0	\$0	177	\$500	\$575	222	\$2,200	\$2,530	267	\$0	\$0
43	\$600	\$690	88	\$0	\$0	133	\$0	\$0	178	\$650	\$748	223	\$1,800	\$2,070	268	\$1,300	\$1,495
44	\$600	\$690	89	\$0	\$0	134	\$0	\$0	179	\$650	\$748	224	\$650	\$748	269	\$850	\$978
45	\$900	\$1,035	90	\$550	\$633	135	\$0	\$0	180	\$2,100	\$2,415	225	\$700	\$805	270	\$2,100	\$2,415

49th Auction

Lot#	Sold	15% (\$)	Lot#	Sold	15% (\$)	Lot#	Sold	15% (\$)	Lot#	Sold	15% (\$)	Lot#	Sold	15% (\$)	Lot#	Sold	15% (\$)
271	\$0	\$0	316	\$750	\$863	405	\$2,000	\$2,300									
272	\$0	\$0	317	\$600	\$690	406	\$1,700	\$1,955									
273	\$3,000	\$3,450	318	\$0	\$0	407	\$1,000	\$1,150									
274	\$200	\$230	319	\$0	\$0	408	\$950	\$1,093									
275	\$650	\$748	320	\$300	\$345	409	\$550	\$633									
276	\$0	\$0	321	\$0	\$0	410	\$1,100	\$1,265									
277	\$0	\$0	322	\$0	\$0	411	\$0	\$0									
278	\$0	\$0	323	\$0	\$0	412	\$700	\$805									
279	\$0	\$0	324	\$850	\$978	413	\$1,500	\$1,725									
280	\$900	\$1,035	325	\$950	\$1,093	414	\$900	\$1,035									
281	\$550	\$633	326	\$500	\$575	415	\$900	\$1,035									
282	\$0	\$0	327	\$400	\$460												
283	\$0	\$0	328	\$4,200	\$4,830												
284	\$0	\$0	329	\$1,200	\$1,380												
285	\$0	\$0	330	\$1,200	\$1,380												
286	\$1,000	\$1,150	331	\$4,000	\$4,600												
287	\$300	\$345	332	\$400	\$460												
288	\$500	\$575	333	\$1,200	\$1,380												
289	\$0	\$0	334	\$1,000	\$1,150												
290	\$450	\$518	335	\$1,100	\$1,265												
291	\$1,500	\$1,725	336	\$750	\$863												
292	\$350	\$403	337	\$0	\$0												
293	\$0	\$0	338	\$0	\$0												
294	\$0	\$0	339	\$0	\$0												
295	\$0	\$0	340	\$400	\$460												
296	\$3,100	\$3,565	341	\$800	\$920												
297	\$400	\$460	342	\$0	\$0												
298	\$0	\$0	343	\$0	\$0												
299	\$1,300	\$1,495	344	\$0	\$0												
300	\$400	\$460	345	\$0	\$0												
301	\$1,700	\$1,955	346	\$500	\$575												
302	\$1,500	\$1,725	347	\$500	\$575												
303	\$0	\$0	348	\$0	\$0												
304	\$0	\$0	349	\$0	\$0												
305	\$300	\$345	350	\$0	\$0												
306	\$0	\$0	351	\$0	\$0												
307	\$1,100	\$1,265	352	\$1,200	\$1,380												
308	\$850	\$978	353	\$2,300	\$2,645												
309	\$0	\$0	354	\$900	\$1,035												
310	\$400	\$460	355	\$0	\$0												
311	\$0	\$0	356	\$0	\$0												
312	\$1,100	\$1,265	401	\$0	\$0												
313	\$0	\$0	402	\$1,500	\$1,725												
314	\$650	\$748	403	\$1,200	\$1,380												
315	\$0	\$0	404	\$0	\$0												

## HKPNC #50 Public Auction 27<sup>th</sup> April 2025

Please bid on the following lots on my behalf (within limits if necessary).

I have read and agree to the 'Terms and Conditions' in the catalog.

**I UNDERSTAND THAT A **15%** BUYER'S PREMIUM WILL BE ADDED TO THE HAMMER PRICE OF EACH LOT.**

Name

Address

---

Telephone

E-mail

---

Bank and commercial philatelic references

---

Signature \_\_\_\_\_ Date \_\_\_\_\_

(Unsigned bid forms will not be accepted.)

LOT NUMBER	MAX.BID HK\$	LOT NUMBER	MAX.BID HK\$

HK\$30 registered airmail shipping fee per shipment, additional charges for carton lot shipments.

Dispatch instructions ☐ HKPO Express (\$250) ☐ Registered Airmail (\$30)

☐ Office pick up

**HONG KONG PHILATELIC & NUMISMATIC COMPANY LIMITED**

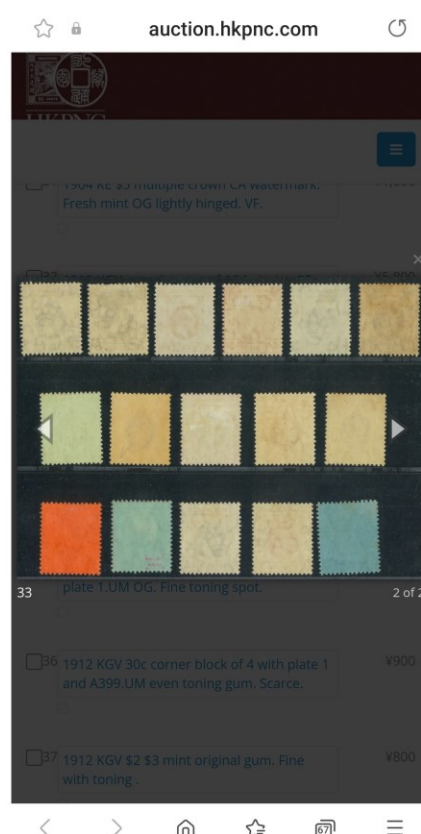
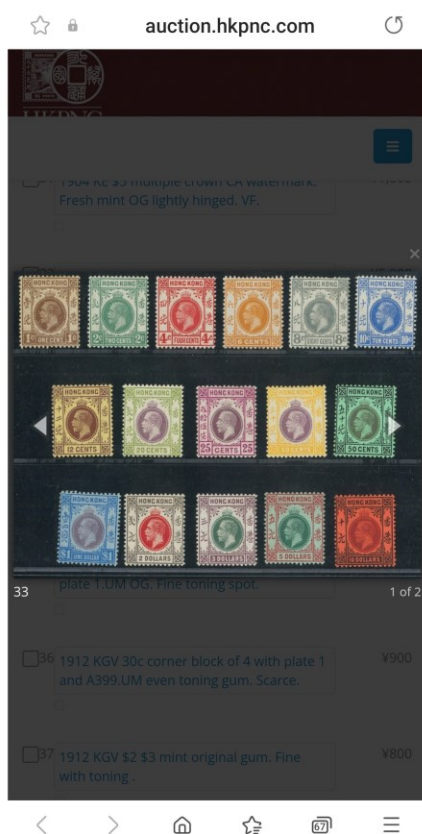
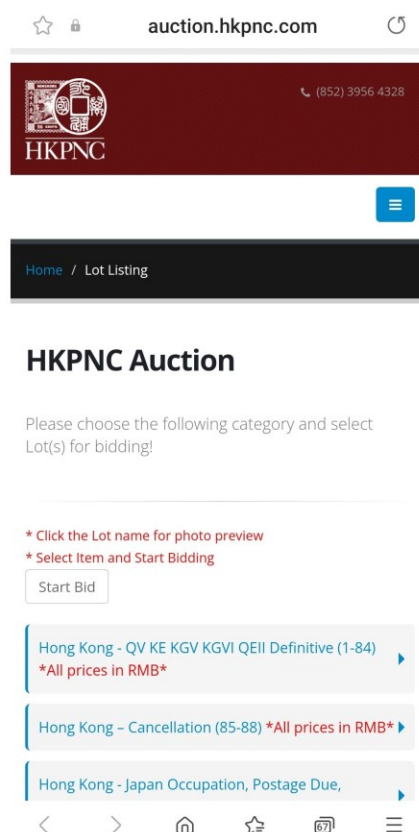
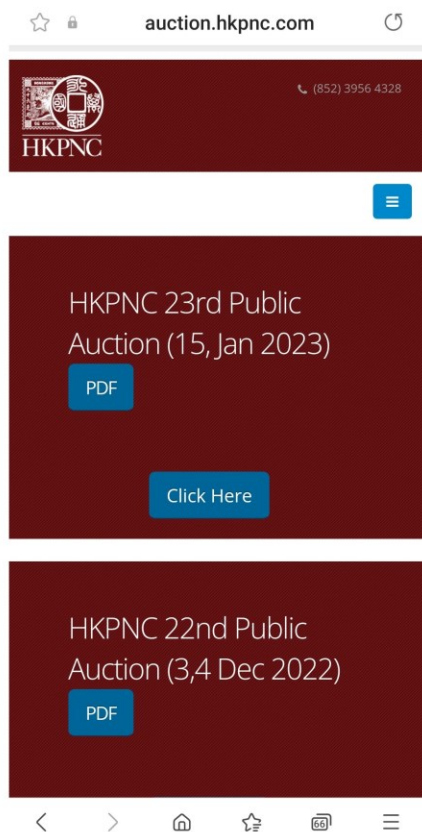
Unit 06, 30/E., Trendy Centre, 682 Castle Peak Road, Lai Chi Kok, Kowloon, HK

Tel: 9213 5613 / 9339 2040

E-mail: [info@hkpnc.com](mailto:info@hkpnc.com)



網上拍賣平台。每項有背圖提供。  
請瀏覽 [auction.hkpnc.com](http://auction.hkpnc.com)





爲了讓閣下的郵品更具觀賞、收藏和投資價值，本公司 **HKPNC** 將會聯同英國知名拍賣行 **Oxford Stamp Auction** 推出收藏品禮盒認證和包裝服務，讓你的收藏品更顯尊貴。

郵品將經由香港 **HKPNC - Winson Ng** 及英國 **Oxford Stamp Auction - Tristan Brittain** 進行真偽鑒定及簽署相關證書永久保真，並輔以精美禮盒包裝，憑著我們多年豐富的收藏品鑒定和拍賣經驗，使你的收藏品更具觀賞和傳承價值。  
首階段我們將由維多利亞時期郵票開始，並陸續延申至往後各時期郵品。



推廣期間，每枚(組)郵票認證連禮盒包裝費用為 **HK\$280** (不論郵品價值，以每盒劃一收費)。認證連包裝時間需時約1個月 (具體以實際運輸等情況而可能有所不同)。  
有興趣客戶，歡迎向本公司查詢。





買賣各類舊洋酒,酒辦  
收藏級威士忌  
歡迎參觀選購



九龍荔枝角青山道682號潮流工貿中心30樓6室

92135613 Winson Ng / 93392040 Erica Chan



